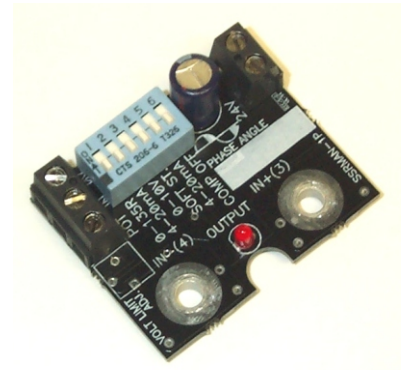


SSRMAN-1P Series

SSR Intelligent Phase Angle Control Module

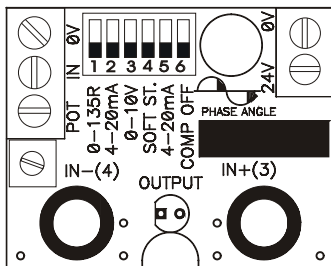
- Provides true linear power output phase angle control
- Suitable for inductive loads
- Small (1.40x1.75") module mounts on the input terminals of an SSR
- Command input accepts 4-20mA, 0-10V, 0-5V, 0-135 Ohm, Pot, PWM
- Line voltage compensation increases stability of your process
- Configurable soft start for sensitive loads
- Automatic 50/60Hz operation
- Adjustable voltage limit (-VL) option
- Single phase and three phase control
- LED output indicator



The microprocessor based SSRMAN-1P is designed for use in a broad range of power control applications. The SSRMAN-1P mounts directly on the input terminals of an SSR and provides true linear phase angle control of the load. The output power is proportional to the command input which can be dip switch selected from seven different industry standard inputs. User configurable features such as Soft Start, Line Voltage Compensation and Voltage Limit make the SSRMAN-1P a perfect fit for any power control application.

SPECIFICATIONS

Command Inputs	4-20mA, 0-10V, 0-5V, 0-135 Ohm, Pot, PWM
Input Impedance	10K (0-10V), 250 Ohm (4-20mA), 100K (0-5V)
0-135 Excitation Current	13mA max
Control Output	SSR Drive, DC pulse, nominally 10V at 15mA
Response Time	50ms
PWM Input Period Range	1-5 seconds
Output Linearity	2%
External Potentiometer Res.	1K-25KOhm
Line Voltage Comp. Range	+15%/-15% up to 100% output
Regulation	2%
Voltage Limit Adj. Range	5-100% of max output voltage
Soft Start Period	20 Seconds to reach 100% output
Ambient Temperature Range	0 to 70 °C
Power Supply	24VAC +15/-15%, Power consumption less than 2 Watts
Line Frequency	47-63 Hz
Dimensions	1.75"x1.4"x0.6"Max



Command Input	1	2	3	5
0-5V (Default)	OFF	OFF	OFF	OFF
Potentiometer	OFF	OFF	OFF	OFF
0-10V	OFF	OFF	ON	OFF
4-20mA	OFF	ON	OFF	ON
1-5V	OFF	OFF	OFF	ON
2-10V	OFF	OFF	ON	ON
0-135Ohm*	ON	OFF	OFF	OFF
PWM**	OFF	OFF	OFF	OFF

Feature to Enable	4	6
Line Voltage Comp Enabled (default)	OFF	OFF
None	OFF	ON
Soft Start Only Enabled	ON	ON
Soft Start & Line Voltage Comp Enabled	ON	OFF

Ordering Information

- SSRMAN-1P (Volts, mA, Pot Input)
- SSRMAN-1P-VL (Voltage Limit Option)
- SSRMAN-1P-135 (0-135Ohm Input)
- SSRMAN-1P-PWM (PWM Input)

*Module must be ordered as SSRMAN-1P-135 for 0-135Ohm support.
 **Module must be ordered as SSRMAN-1P-PWM for PWM support.