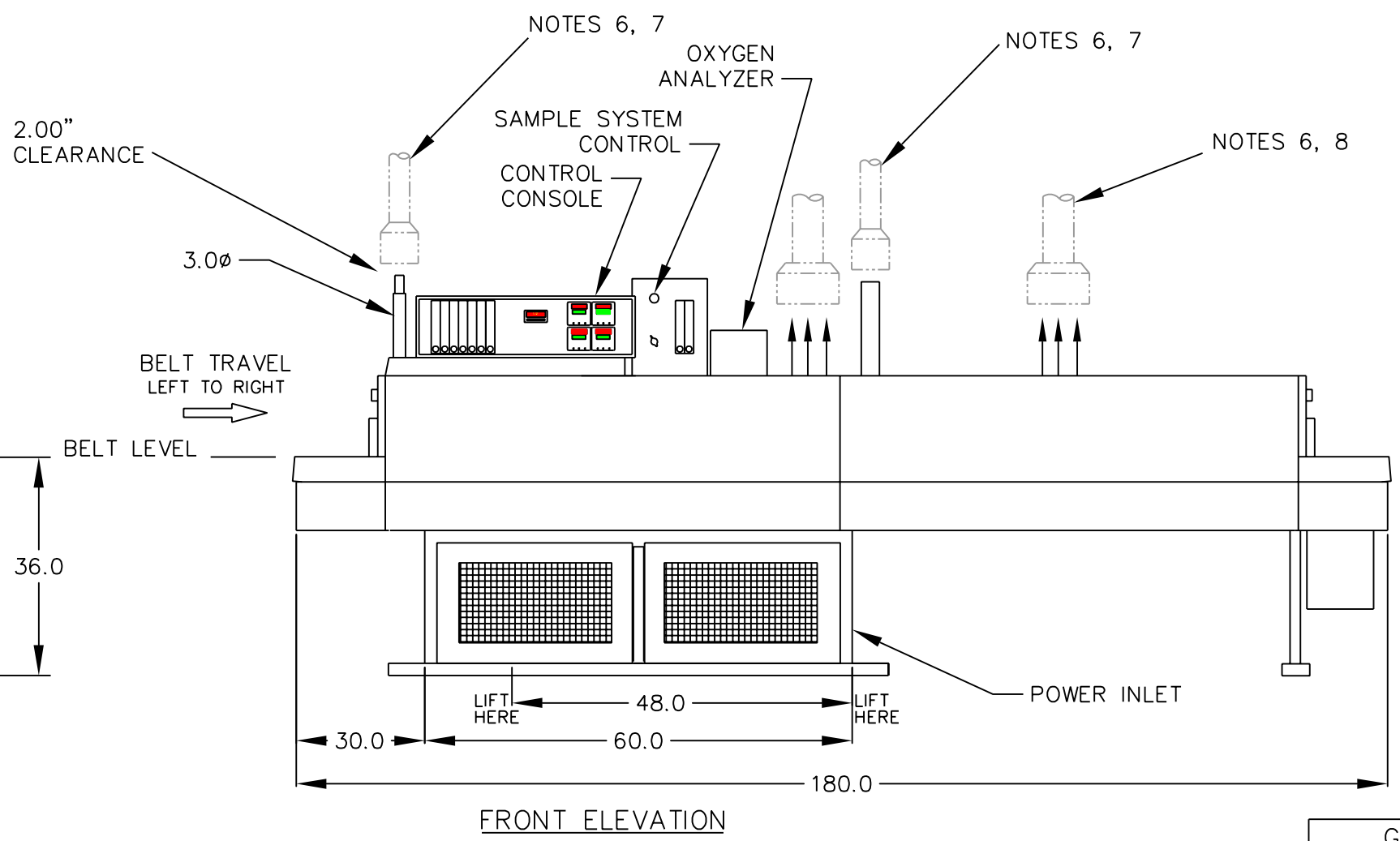
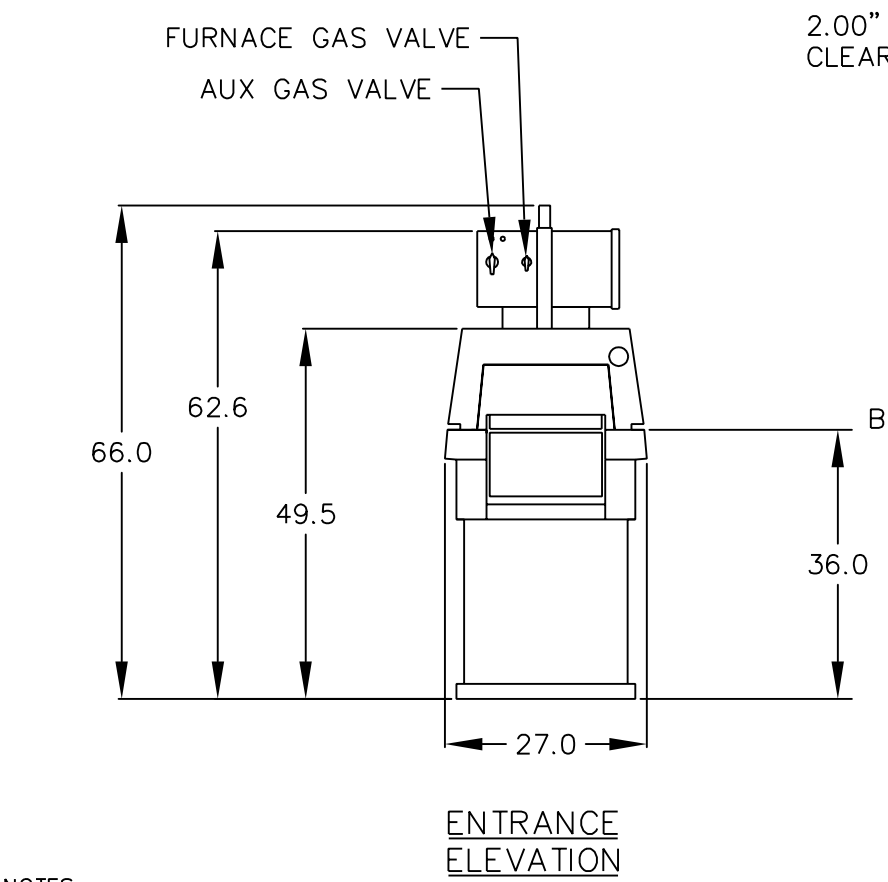
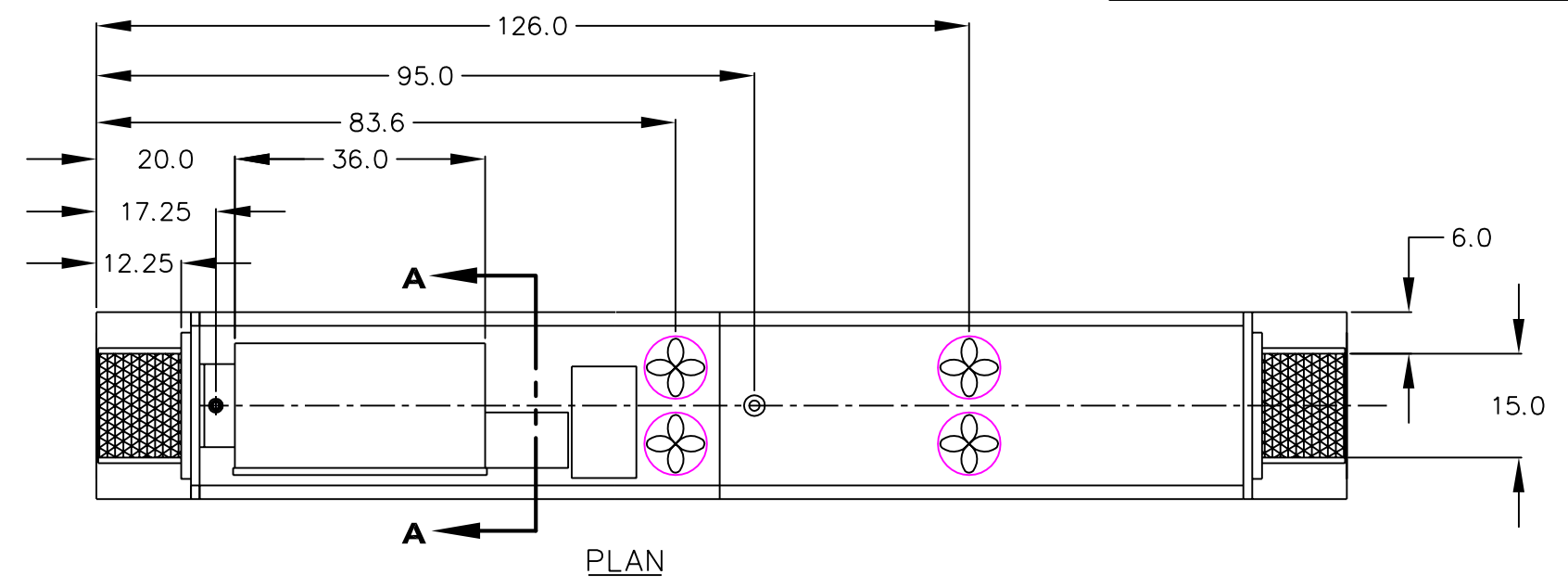
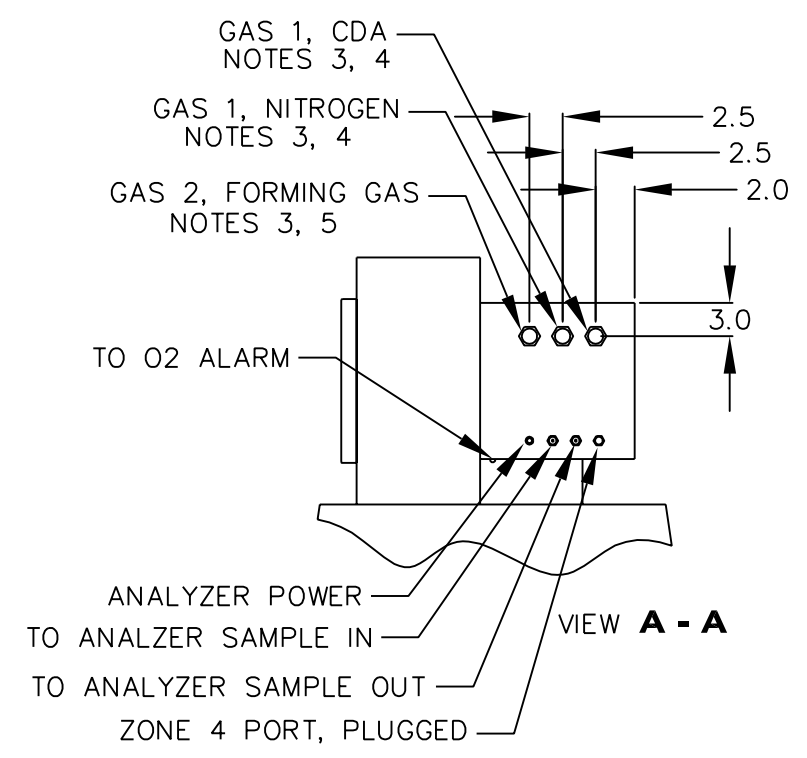



DRAWINGS & SCHEMATICS

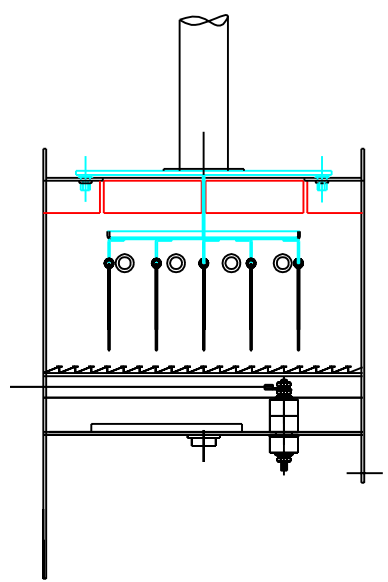
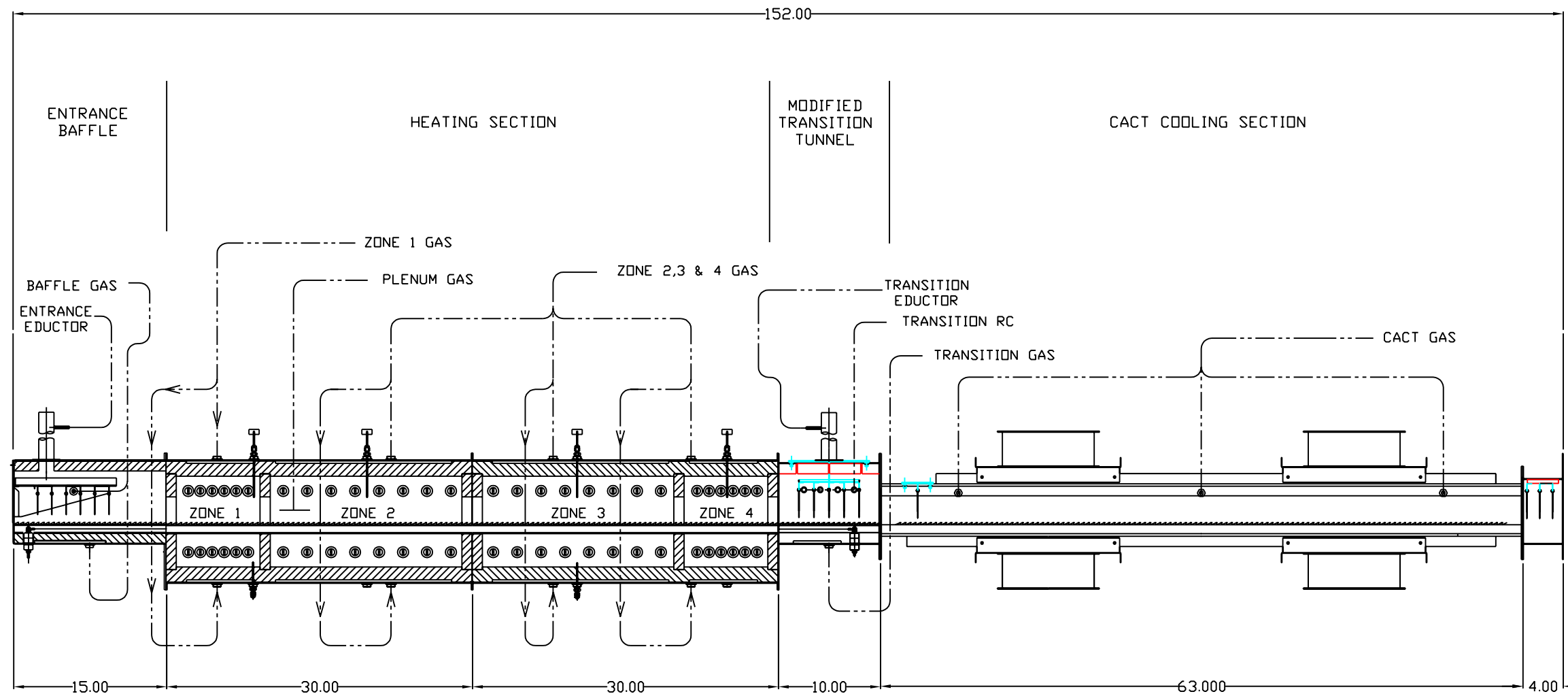
Job/Master	Drawing Nbr.	Title
15-003	803-091615-45	FURNACE ARRANGEMENT, CU-915
15-003	803-091734-19	CHAMBER ARRANGEMENT, CU-915
15-003	214-091814-60	TRANSITION TUNNEL MOD
15-003	801-090342-05	PROCESS GAS PLUMBING, 3-GAS, 2-MODE
15-003	801-090776	GAS SAMPLING SYSTEM
15-003	802-101779-04	SAFETY PANEL ANALOG
15-003	802-101784-05	CONTROL ENCLOSURE ANALOG
15-003	802-101785-05	ALT ZONE CONTROL PANEL ANALOG
15-003	802-101781-05	FRAME WIRING – ANALOG
15-003	802-101814-08	ELEMENT WIRING CU-915
15-003	802-101873	MOISTURE & OXYGEN ANALYZER CONTROL

REVISIONS			
REV	DESCRIPTION	DATE	APPROVED




- NOTES:
1. ALL DIMENSIONS ARE APPROXIMATE
 2. OPTIONAL EQUIPMENT.
 3. GAS CONNECTION 3/4 FEMALE NPT AT FURNACE
 4. CONNECT TO GAS 1 INLET: AIR (CDA) OR NITROGEN SUPPLY, DRY, FILTERED AND REGULATED TO 70 PSIG.
 5. DUAL GAS OPTION. CONNECT TO GAS 2 INLET: FORMING GAS OR OTHER SPECIALTY GAS FOR HEATING ZONES REGULATED TO 70 PSIG.
 6. BY OTHERS.
 7. RECOMMENDED PROCESS GAS EXHAUST 4.0 DIA INSULATED DUCT WITH 8.0 DIA COLLECTOR HOOD FOR MAX 82 SCFM @ 200C.
 8. OPTIONAL CABINET VENTILATION 4.0 DIA DUCT WITH 8.0 X 12.0 RECTANGULAR HOOD FOR 2200 CFM @ 50C.
 9. STANDARD TEMPERATURE; PRESSURE: 70F (21.1C); 14.7 PSIA (101.3 kPa).
 10. APPROXIMATE FURNACE WIEGHT 2600 LBS

PROPRIETARY AND CONFIDENTIAL		UNLESS OTHERWISE SPECIFIED DIMENSIONS ARE IN INCHES TOLERANCES ARE: DECIMALS ANGLES FRACTIONS X ± .3 XX ± .5° X/XX ± 1/4 .XX ± .03 XX.X ± .2°		MODEL NO. CU-915		 DIVISION OF LOCHABER CORNWALL INC	
THE INFORMATION CONTAINED IN THIS DRAWING IS THE SOLE PROPERTY OF LOCHABER CORNWALL, INC. ANY REPRODUCTION IN PART OR AS A WHOLE WITHOUT THE WRITTEN PERMISSION OF LOCHABER CORNWALL, INC. IS PROHIBITED.		MATERIAL		APPROVALS		DATE	
CONFIG.	USED ON	FINISH		DRAWN C ROODE		5/14/15	
NEXT ASSY				CHECKED J CLARK		5/14/15	
APPLICATION	DO NOT SCALE DRAWING			ISSUED J CLARK		5/14/15	
GE FUEL CELLS LLC LCI Furnaces DIVISION OF LOCHABER CORNWALL INC				TITLE FURNACE ARRANGEMENT			
SCALE NONE		REF: GE 70000369		SHEET 1 OF 1		SIZE JOB NO. DWG. NO. REV. 15-003 803-091615-45 2	



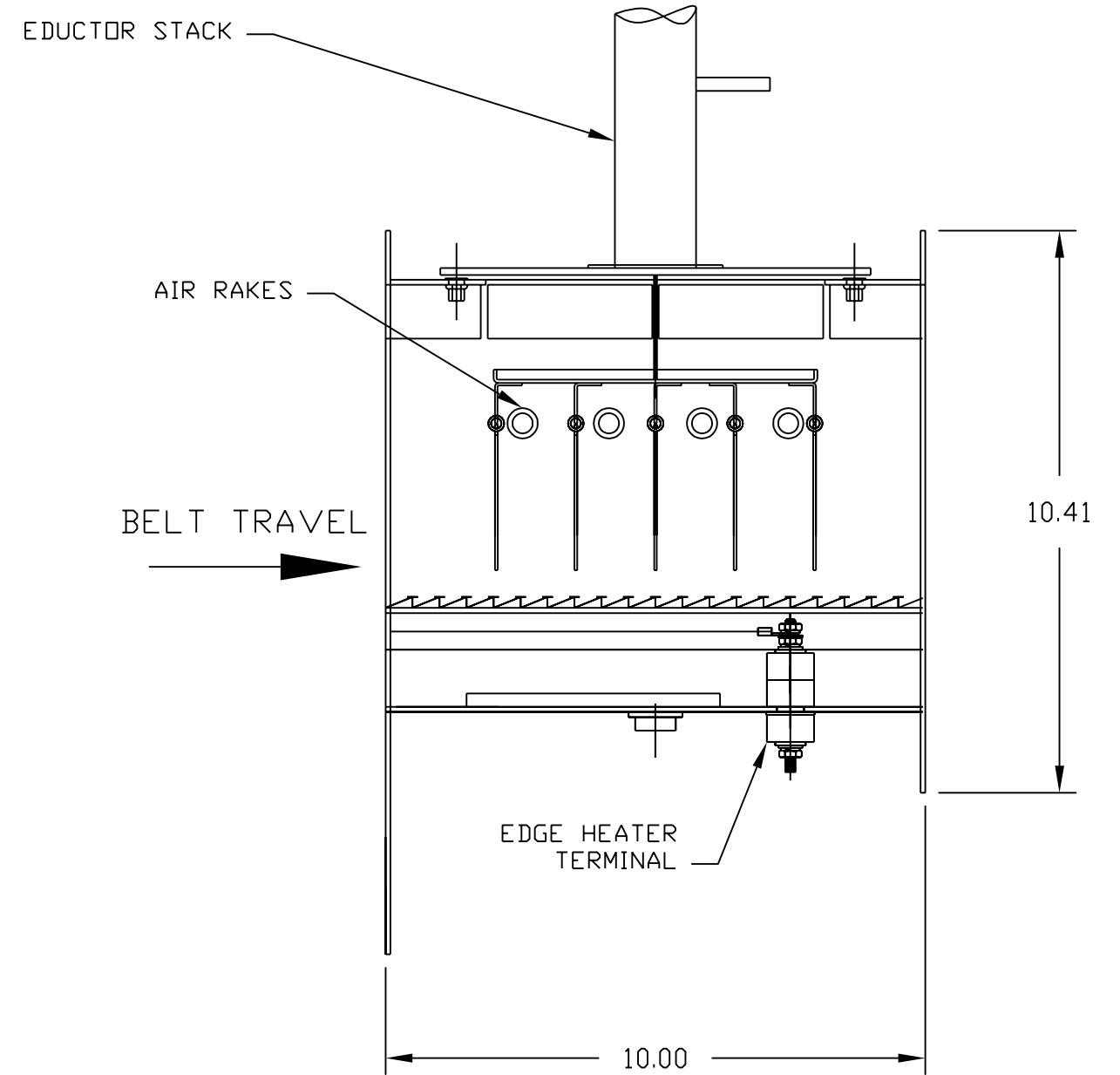
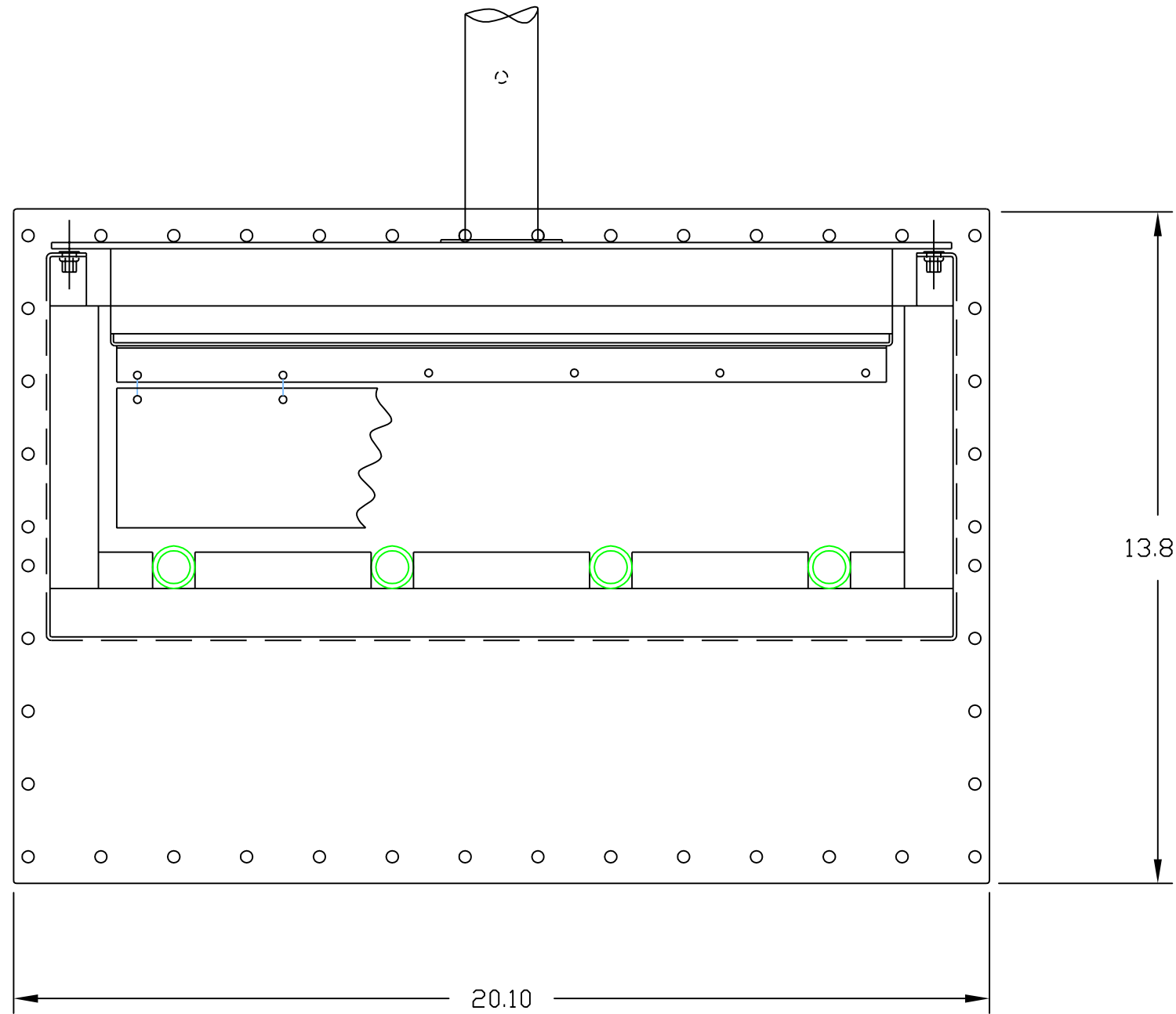
MODIFIED 10' LONG TRANSITION TUNNEL

RTC CU-915 CHAMBER

GE FUEL CELLS LLC			
PRELIMINARY			
 LCI Furnaces DIVISION OF LOCHABER CORNWALL INC		TITLE	
		CHAMBER ARRANGEMENT	
SIZE	JOB NO.	DWG. NO.	REV.
SCALE NONE	15-003	803-091734-19	0
REF: GE 700000369		SHEET 1 OF 1	

PROPRIETARY AND CONFIDENTIAL THE INFORMATION CONTAINED IN THIS DRAWING IS THE SOLE PROPERTY OF LOCHABER CORNWALL, INC. ANY REPRODUCTION IN PART OR AS A WHOLE WITHOUT THE WRITTEN PERMISSION OF LOCHABER CORNWALL, INC. IS PROHIBITED.	UNLESS OTHERWISE SPECIFIED DIMENSIONS ARE IN INCHES TOLERANCES ARE: DECIMALS ANGLES FRACTIONS .X ± .5 XX±.5° X/X±1/4 .XX ± .03 XX.X±.2°	CU-915	
	MATERIAL	APPROVALS	DATE
	FINISH	DRAWN C ROODE	4/5/15
	DO NOT SCALE DRAWING	CHECKED J CLARK	4/5/15
		ISSUED	

REVISIONS				
REV	DESCRIPTION	EO#	DATE	APPROVED

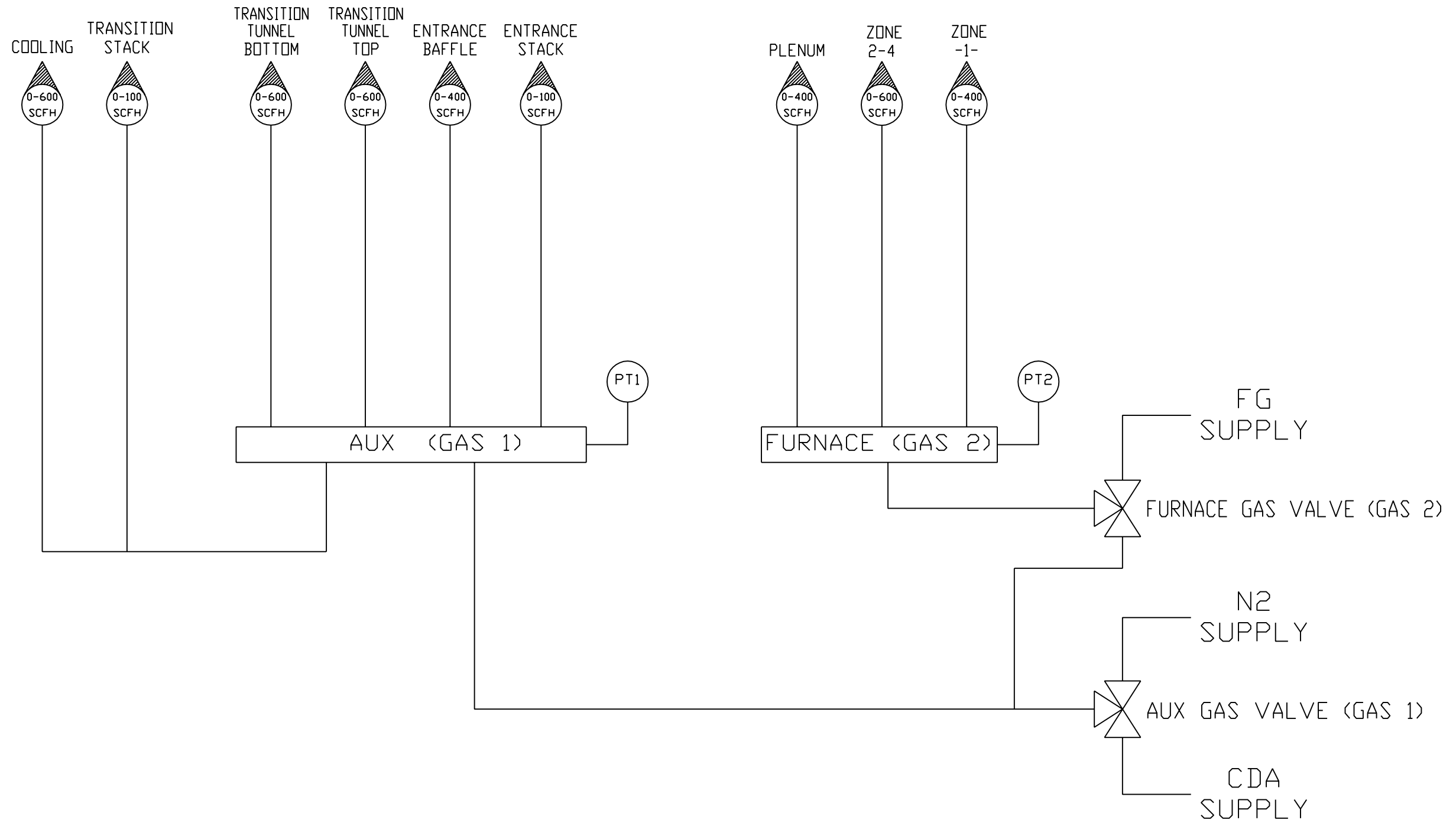



GE FUEL CELLS LLC
PRELIMINARY



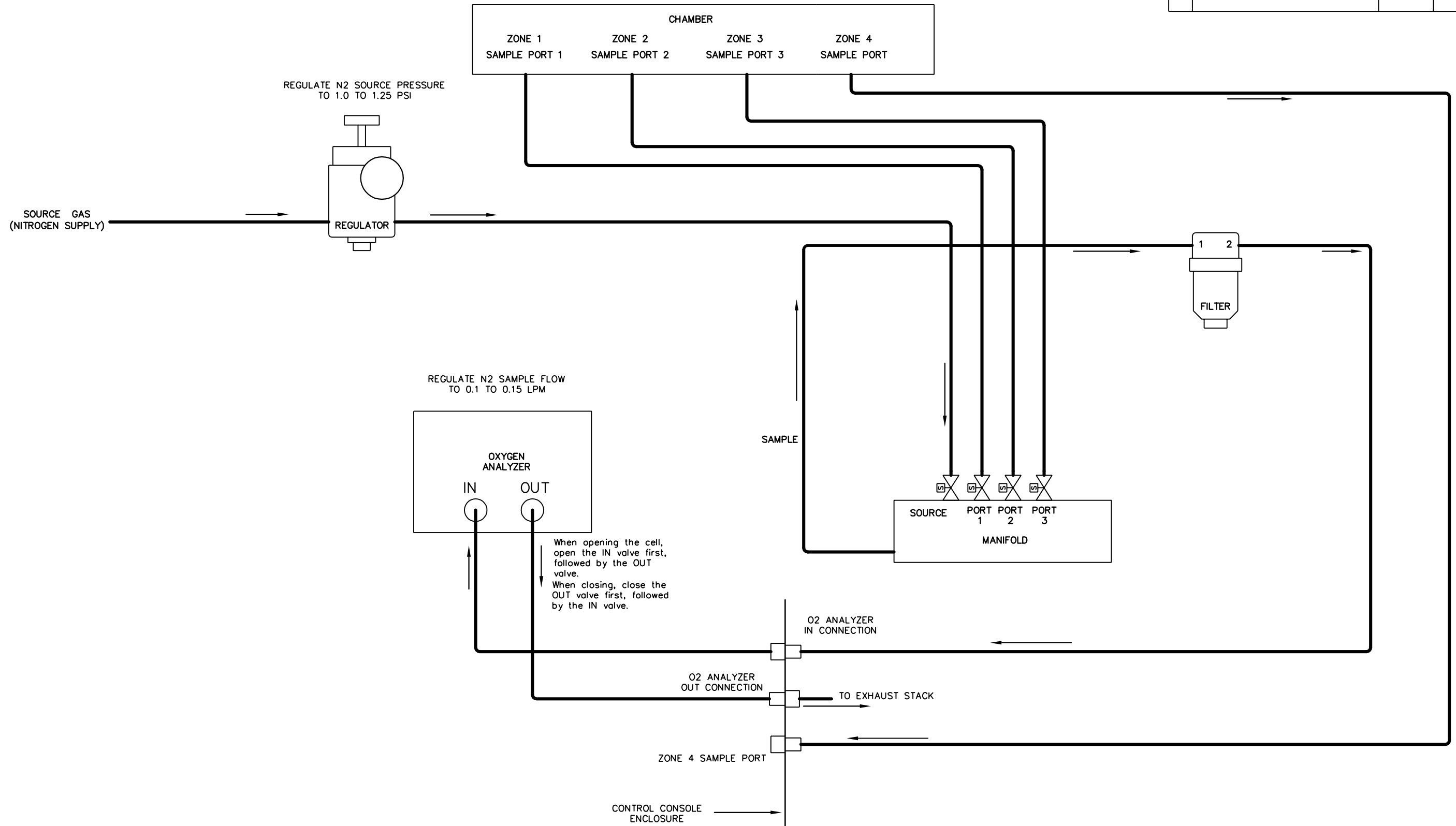
UNLESS OTHERWISE SPECIFIED DIMENSIONS ARE IN INCHES TOLERANCES ARE:		MODEL NO. 15' BELT, 10 LONG T.T.	
DECIMALS .XX ±.03 .XXX ±.010	ANGLES XX ±.5 XX.X ±.2	FRACTIONS X/X ± 1/32	
MATERIAL	FINISH	APPROVALS	DATE
		DRAWN C ROODE	5/15/15
		CHECKED J CLARK	5/15/15
		ISSUED	
NEXT ASSY	USED ON		
APPLICATION	DO NOT SCALE DRAWING		

TITLE TRANSITION TUNNEL, RAPID COOL MOD			
SIZE B	JOB NO. 15-003	DWG NO. 214-091814-60	REV 0
SCALE NONE	REF: GE 700000369	SHEET 1 OF 1	




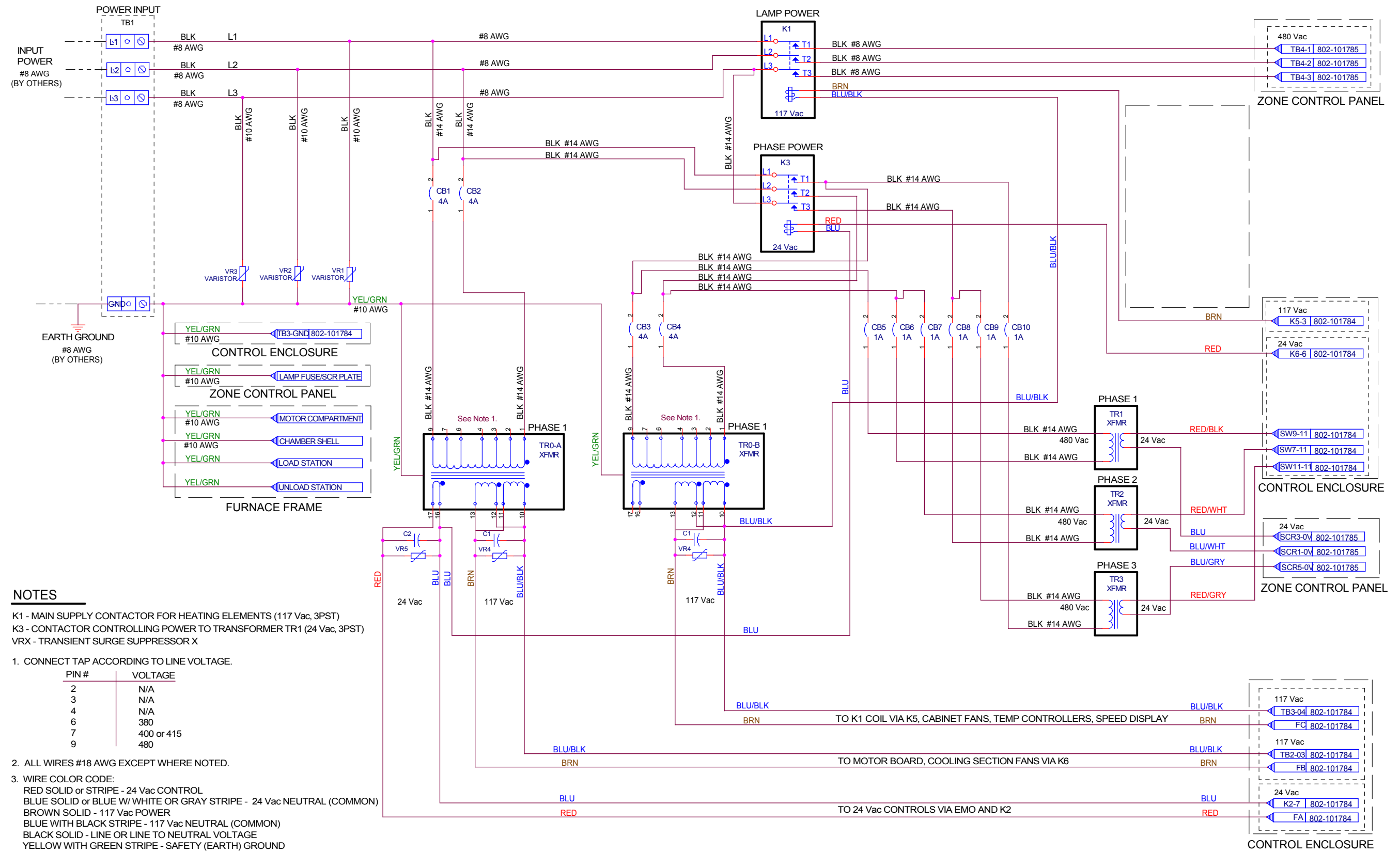
PROPRIETARY AND CONFIDENTIAL THE INFORMATION CONTAINED IN THIS DRAWING IS THE SOLE PROPERTY OF LOCHABER CORNWALL, INC. ANY REPRODUCTION IN PART OR AS A WHOLE WITHOUT THE WRITTEN PERMISSION OF LOCHABER CORNWALL, INC. IS PROHIBITED.	UNLESS OTHERWISE SPECIFIED DIMENSIONS ARE IN INCHES TOLERANCES ARE: DECIMALS ANGLES FRACTIONS .X ± .5 XX±.5° X/X±1/4 .XX ± .03 XX.X±.2*	APPROVALS DATE		 LCI Furnaces DIVISION OF LOCHABER CORNWALL INC
	MATERIAL	DRAWN C ROODE 5/26/15	TITLE PROCESS PLUMBING THREE GAS TWO MODE	
	FINISH	CHECKED J CLARK 5/26/15	ISSUED J CLARK 5/26/15	SIZE MODEL NO. DWG. NO. REV. 15-003 801-090342-05 -
	DO NOT SCALE DRAWING	SCALE NONE		SHEET 1 OF 1

REVISIONS			
REV	DESCRIPTION	DATE	APPROVED



When opening the cell, open the IN valve first, followed by the OUT valve.
When closing, close the OUT valve first, followed by the IN valve.

UNLESS OTHERWISE SPECIFIED DIMENSIONS ARE IN INCHES TOLERANCES ARE:		CONTRACT NO.		 LCI Furnaces DIVISION OF LOCHABER CORNWALL INC	
DECIMALS .XX±.03 .XXX±.010	ANGLES XX±.5° XX.X±.2°	FRACTIONS X/X±1/32	APPROVALS	DATE	TITLE
MATERIAL	FINISH		DRAWN C ROODE	5/26/15	GAS SAMPLING SYSTEM OXYGEN ANALYZER
NEXT ASSY	USED ON	ISSUED J CLARK	5/26/15	SIZE D	
APPLICATION		DO NOT SCALE DRAWING	5/26/15	JOB NO. 15-003	
			DWG NO. 801-090776-05		REV. 0
				SCALE NONE	SHEET 1 OF 1



NOTES

K1 - MAIN SUPPLY CONTACTOR FOR HEATING ELEMENTS (117 Vac, 3PST)
 K3 - CONTACTOR CONTROLLING POWER TO TRANSFORMER TR1 (24 Vac, 3PST)
 VRX - TRANSIENT SURGE SUPPRESSOR X

1. CONNECT TAP ACCORDING TO LINE VOLTAGE.

PIN #	VOLTAGE
2	N/A
3	N/A
4	N/A
6	380
7	400 or 415
9	480

2. ALL WIRES #18 AWG EXCEPT WHERE NOTED.

3. WIRE COLOR CODE:
 RED SOLID or STRIPE - 24 Vac CONTROL
 BLUE SOLID or BLUE W/ WHITE OR GRAY STRIPE - 24 Vac NEUTRAL (COMMON)
 BROWN SOLID - 117 Vac POWER
 BLUE WITH BLACK STRIPE - 117 Vac NEUTRAL (COMMON)
 BLACK SOLID - LINE OR LINE TO NEUTRAL VOLTAGE
 YELLOW WITH GREEN STRIPE - SAFETY (EARTH) GROUND

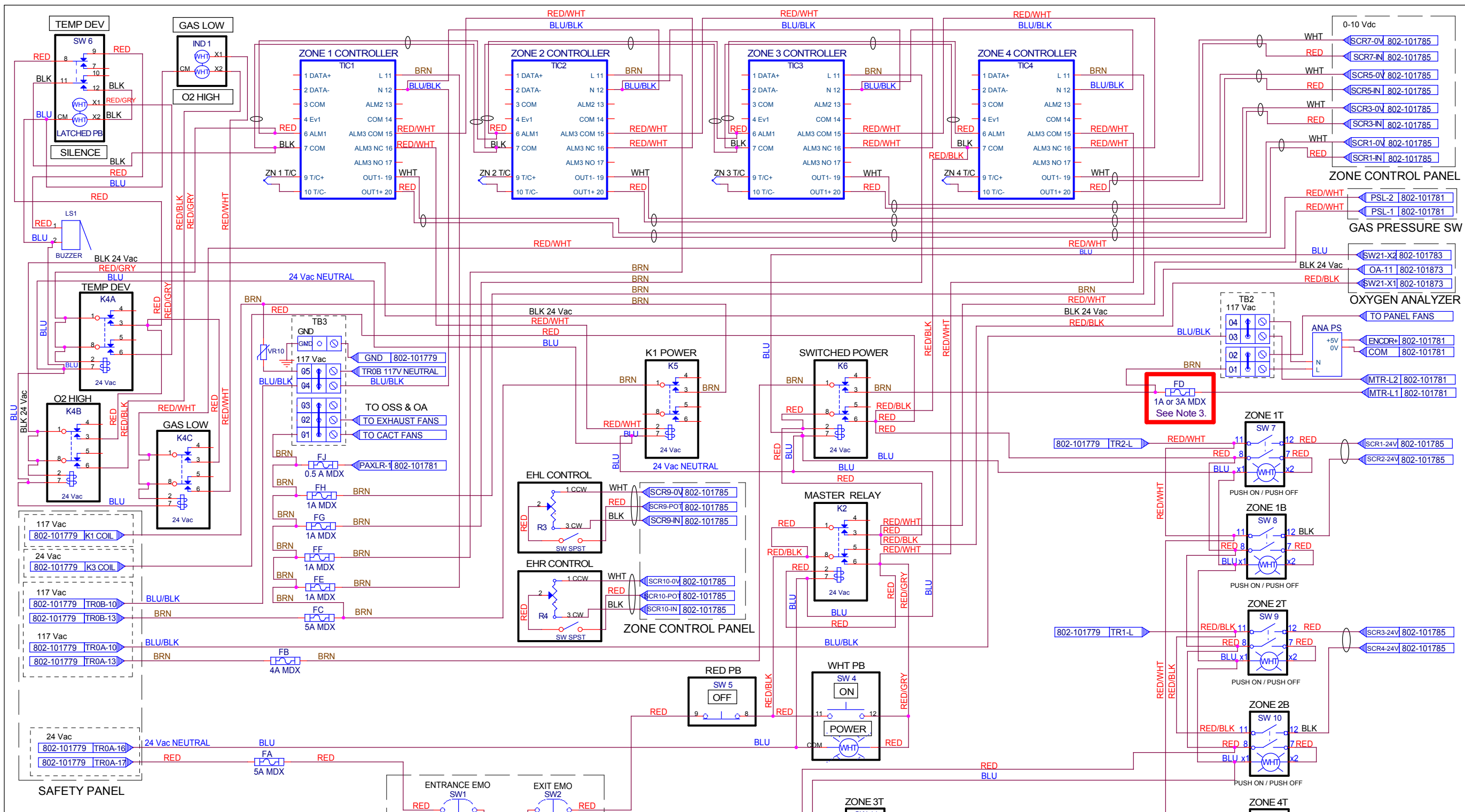
REV	DESCRIPTION	DATE	APPROVED	REV	DESCRIPTION	DATE	APPROVED
2	FUSES REPLACED WITH CB	07/16/15	S BARBER	1	OFF-PAGE CONNECTIONS TO K2, K5, K6 CHANGED	06/17/15	S BARBER

APPROVALS		DATE	Title
DRAWN	S BARBER	06/01/2015	SAFETY PANEL ANALOG
CHECKED	S BARBER	06/01/2015	
ISSUED	J CLARK	07/07/2015	

Size	Document Number	Rev
C	15-003	802-101779-04

Date	Sheet	of
Tuesday, July 07, 2015	1	1

LCI Furnaces
 DIVISION OF LOCHABER CORNWALL, INC.
 675 NORTH ECKHOFF STREET, BLDG D, ORANGE, CA 92668 USA



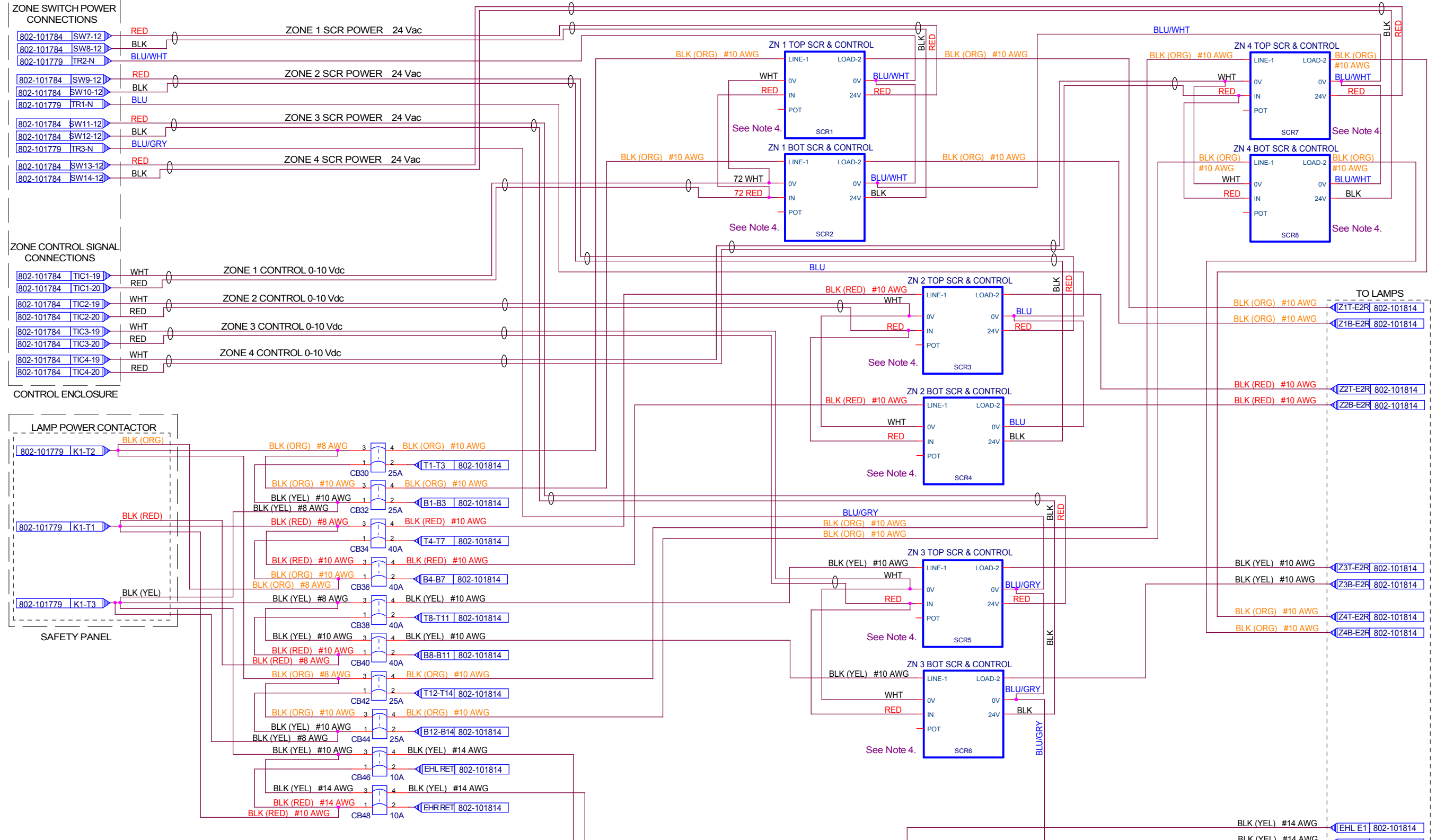
- NOTES**
- K2 - CONTROL CIRCUIT POWER ON LATCHING RELAY (24 Vac, DPDT)
 - K5 - RELAY CONTROLLING K1 (24 Vac, DPDT)
 - K6 - RELAY CONTROLLING SWITCHED 117 Vac OUTPUT OF TR0 (24 Vac, DPDT)
- ALL WIRES #18 AWG EXCEPT WHERE NOTED.
 - WIRE COLOR CODE:
 RED SOLID or STRIPE - 24 Vac CONTROL
 BLUE SOLID or BLUE W/ WHITE OR GRAY STRIPE - 24 Vac NEUTRAL
 BROWN SOLID - 117 Vac POWER
 BLUE WITH BLACK STRIPE - 117 Vac NEUTRAL (COMMON)
 BLACK SOLID - LINE OR LINE TO NEUTRAL VOLTAGE
 YELLOW WITH GREEN STRIPE - SAFETY (EARTH) GROUND
 - CHANGE FUSE FD: 1A FOR 1/20 HP MOTOR OR 3A FOR 1/8 HP MOTOR.**
- | USE | WITH MOTOR |
|-------------|--|
| FUSE FD: 1A | MINARIK/BISON MODEL 507-01-416 1/20 HP 0.9 RPM |
| FUSE FD: 3A | BISON MODEL 011-336-3062 1/8 HP 13 RPM |

REV	DESCRIPTION	DATE	APPROVED	REV	DESCRIPTION	DATE	APPROVED
4	ADDED TABLE TO NOTE 3	07/16/15	S BARBER	4	ADDED TABLE TO NOTE 3	07/16/15	S BARBER
3	EMO & K4B ALERT WIRE COLOR CHANGES	07/10/15	S BARBER	3	EMO & K4B ALERT WIRE COLOR CHANGES	07/10/15	S BARBER
2	SW4 & SW5 DRAWN AS WIRED	07/02/15	S BARBER	2	SW4 & SW5 DRAWN AS WIRED	07/02/15	S BARBER
1	K2, K4x, K5 & K6 PINOUT CHANGED	06/17/15	S BARBER	1	K2, K4x, K5 & K6 PINOUT CHANGED	06/17/15	S BARBER

LCI Furnaces
 DIVISION OF LOCHABER CORNWALL, INC.
 675 NORTH ECKHOFF STREET, BLDG D, ORANGE, CA 92668 USA

CONTROL ENCLOSURE ANALOG

Size: C 15-003 | 802-101784-05 | Rev 4
 Date: Thursday, July 16, 2015 | Sheet 1 of 1

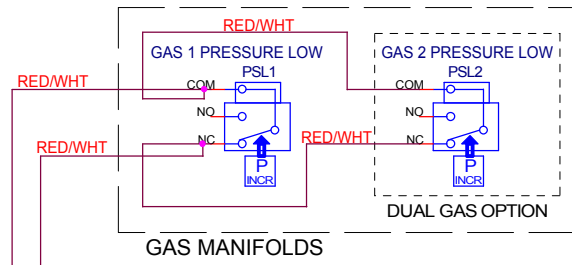
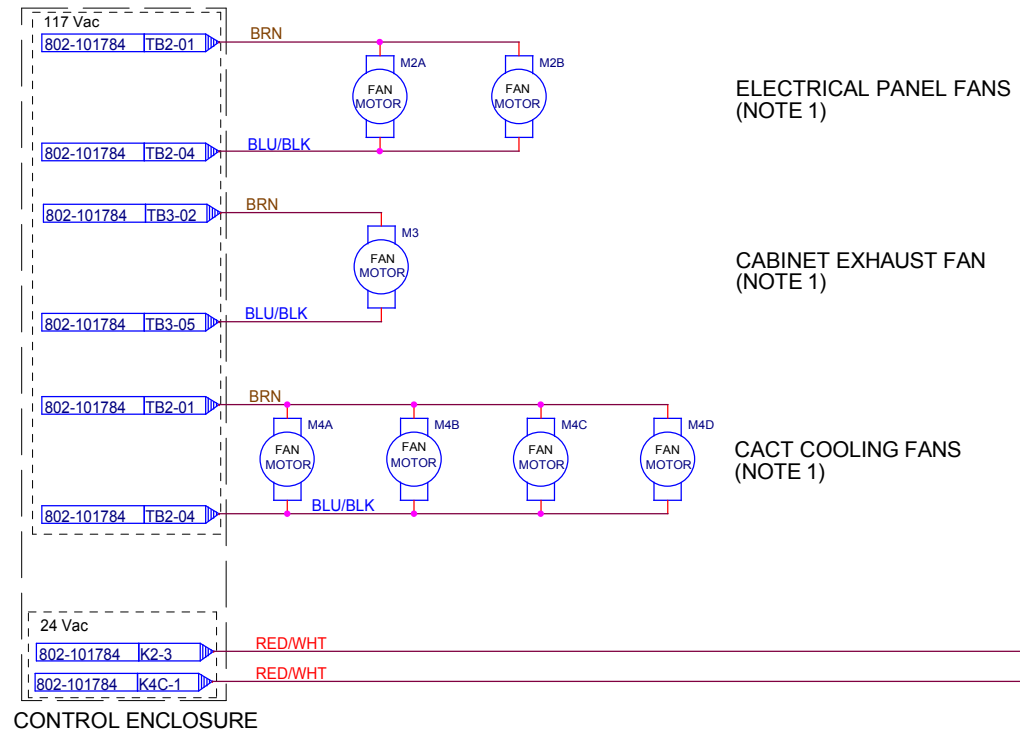


- NOTES**
1. SINGLE WIRES #18 AWG, EXCEPT AS NOTED.
 2. WIRE COLOR CODE:
 RED SOLID or STRIPE - 24 Vac CONTROL
 BLUE SOLID or BLUE WITH WHITE or GRAY STRIPE - 24 Vac NEUTRAL (COMMON)
 BROWN SOLID - 117 Vac POWER
 BLUE WITH BLACK STRIPE - 117 Vac NEUTRAL (COMMON)
 ALL 2- or 3-CONDUCTOR CABLE 24 V OR LESS
 BLACK SOLID - LINE VOLTAGE (208-480 Vac)
 BLK (RED BAND) - LEG 1
 BLK (ORG BAND) - LEG 2
 BLK (YEL BAND) - LEG 3
 YELLOW WITH GREEN STRIPE - SAFETY (EARTH) GROUND
 3. SCR_x DIP SW: SET 3 & 4 "ON" (UP), OTHERS "OFF" (DN)
 4. ZONE SCR SPANS SET PER 802-101501
 5. EHL & EHR SCR SPANS SET FOR 1/2 VOLTAGE PER 802-101501

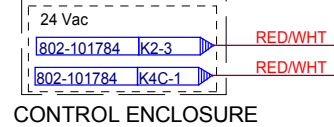
REV	DESCRIPTION	DATE	APPROVED	REV	DESCRIPTION	DATE	APPROVED

APPROVALS		DATE	Title	
DRAWN	S BARBER	06/03/2015	ALT ZONE CNTRL PANEL ANALOG	
CHECKED	S BARBER	06/03/2015	Size	Document Number
ISSUED	J CLARK	07/07/2015	C 15-003	802-101785-05
Date: Monday, July 06, 2015		Sheet		1 of 1

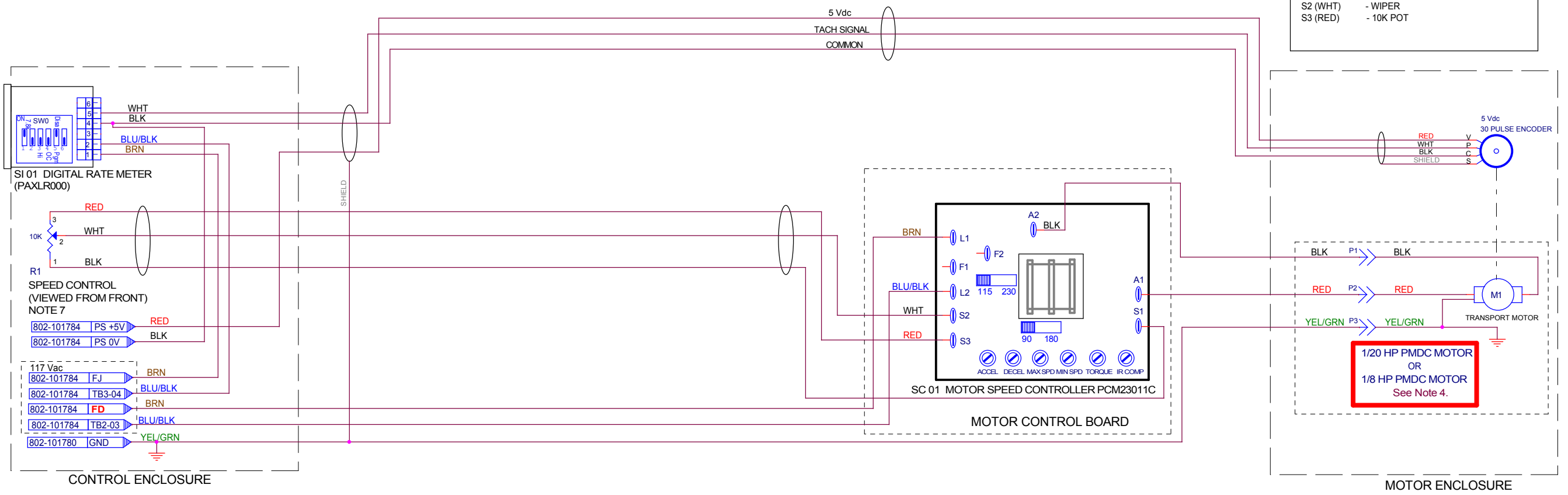
LCI Furnaces
 DIVISION OF LOCHABER CORNWALL, INC.
 675 NORTH ECKHOFF STREET, BLDG D, ORANGE, CA 92668 USA



TO ADJUST GAS PRESSURE SWITCH SETPOINT:
 =====
 CW = RAISES SETPOINT (ALARMS AT HIGHER PRESSURE, REQUIRES MORE PRESSURE TO RELEASE ALARM)
 CCW = LOWERS SETPOINT (ALARMS AT LOWER PRESSURE, REQUIRES LOWER PRESSURE TO RELEASE ALARM)



MOTOR SPEED CONTROLLER CONNECTIONS	
A1 (RED)	+ MOTOR ARMATURE
A2 (BLK)	- MOTOR ARMATURE
L1 (BRN)	117 Vac Line
L2 (BLU/BLK)	117 Vac Neutral
S1 (BLK)	- 10K POT
S2 (WHT)	- WIPER
S3 (RED)	- 10K POT



- NOTES:**
- NUMBER OF FANS MAY VARY.
 - SUPPLIED WITH OPTIONAL EQUIPMENT.
 - REVERSE A1 AND A2 FOR PROPER MOTOR ROTATION.
 - CHANGE FUSE FD: 1A FOR 1/20 HP MOTOR OR 3A FOR 1/8 HP MOTOR.**
- | USE | WITH MOTOR |
|-------------|--|
| FUSE FD: 1A | MINARIK/BISON MODEL 507-01-416 1/20 HP 0.9 RPM |
| FUSE FD: 3A | BISON MODEL 011-336-3062 1/8 HP 13 RPM |
- ALL WIRES 18 AWG UNLESS OTHERWISE NOTED.
 - ALL MULTI-CONDUCTOR CABLE 22 AWG WIRES.
 - WIRE R1 FOR CW INCREASE IN MOTOR SPEED.

REV	DESCRIPTION	DATE	APPROVED
4	ADDED TABLE TO NOTE 3	07/16/15	S BARBER
3	PRESSURE SWITCHES NOW IN PARALLEL	06/26/15	S BARBER
2	CHANGED MOTOR SPEED CONTROLLER	06/18/15	S BARBER
1	OFF-PAGE CONNECTIONS TO K2, K4C CHANGED	06/17/15	S BARBER

APPROVALS		DATE
DRAWN	S BARBER	05/29/15
CHECKED	S BARBER	05/29/15
ISSUED	J CLARK	07/07/15

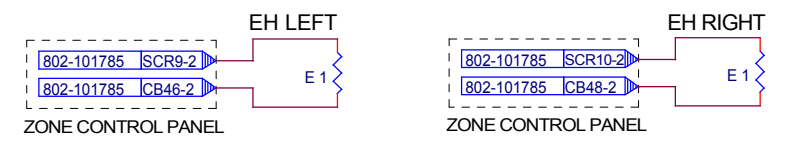
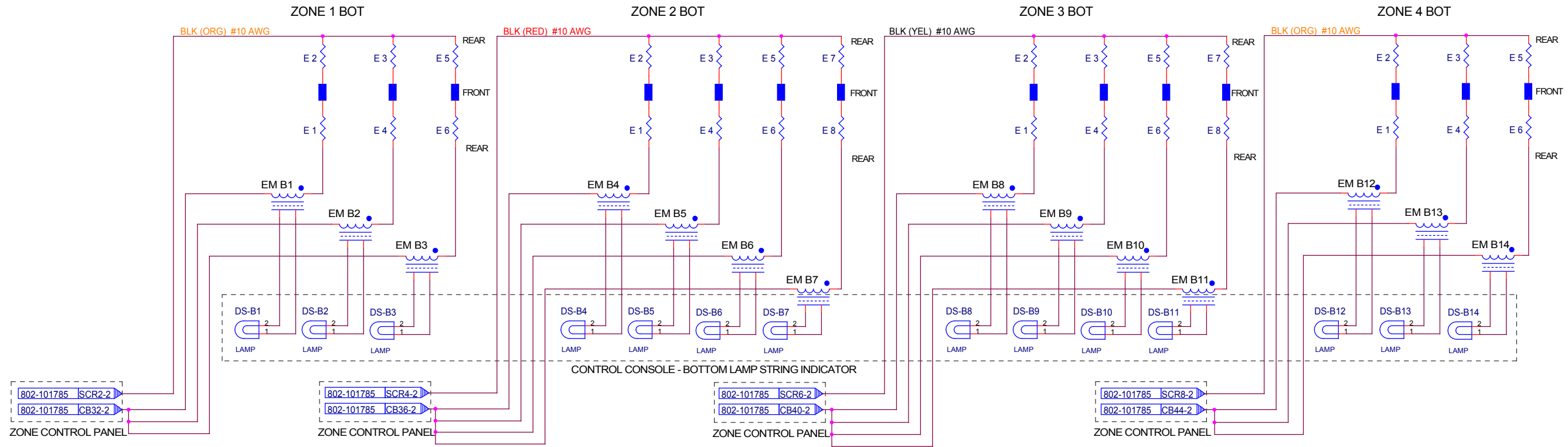
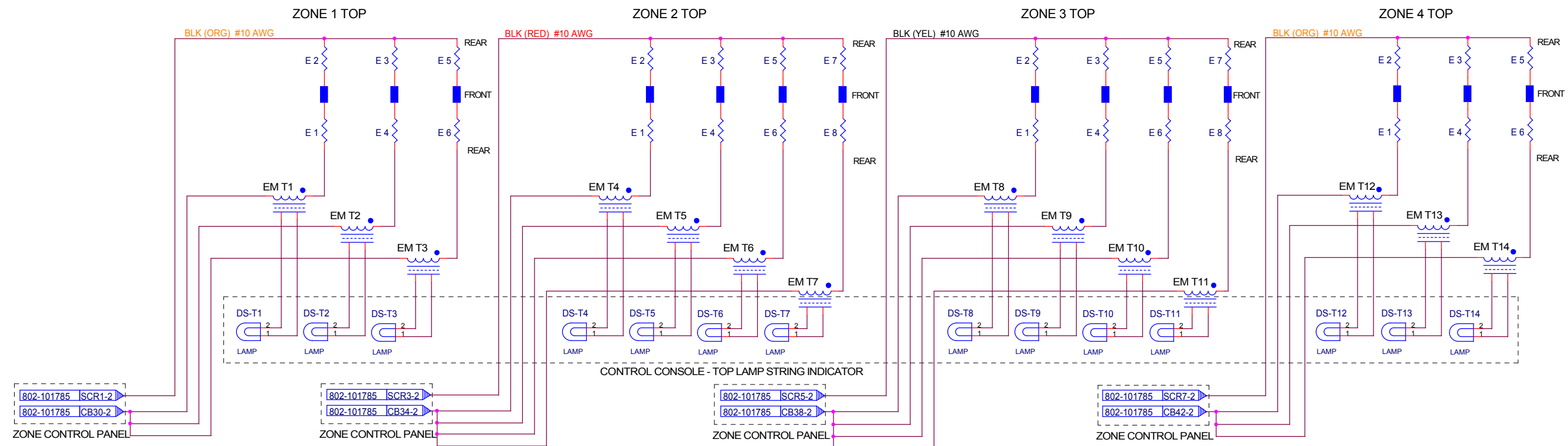
LCI Furnaces
 DIVISION OF LOCHABER CORNWALL, INC.
 675 NORTH ECKHOFF STREET, BLDG D, ORANGE, CA 92668 USA

MODEL: REFURB RTC CU-915

Title: **FRAME WIRING - ANALOG**

Size: C Document Number: 15-003 | 802-101781-05 Rev: 4

Date: Thursday, July 16, 2015 Sheet: 1 of 1

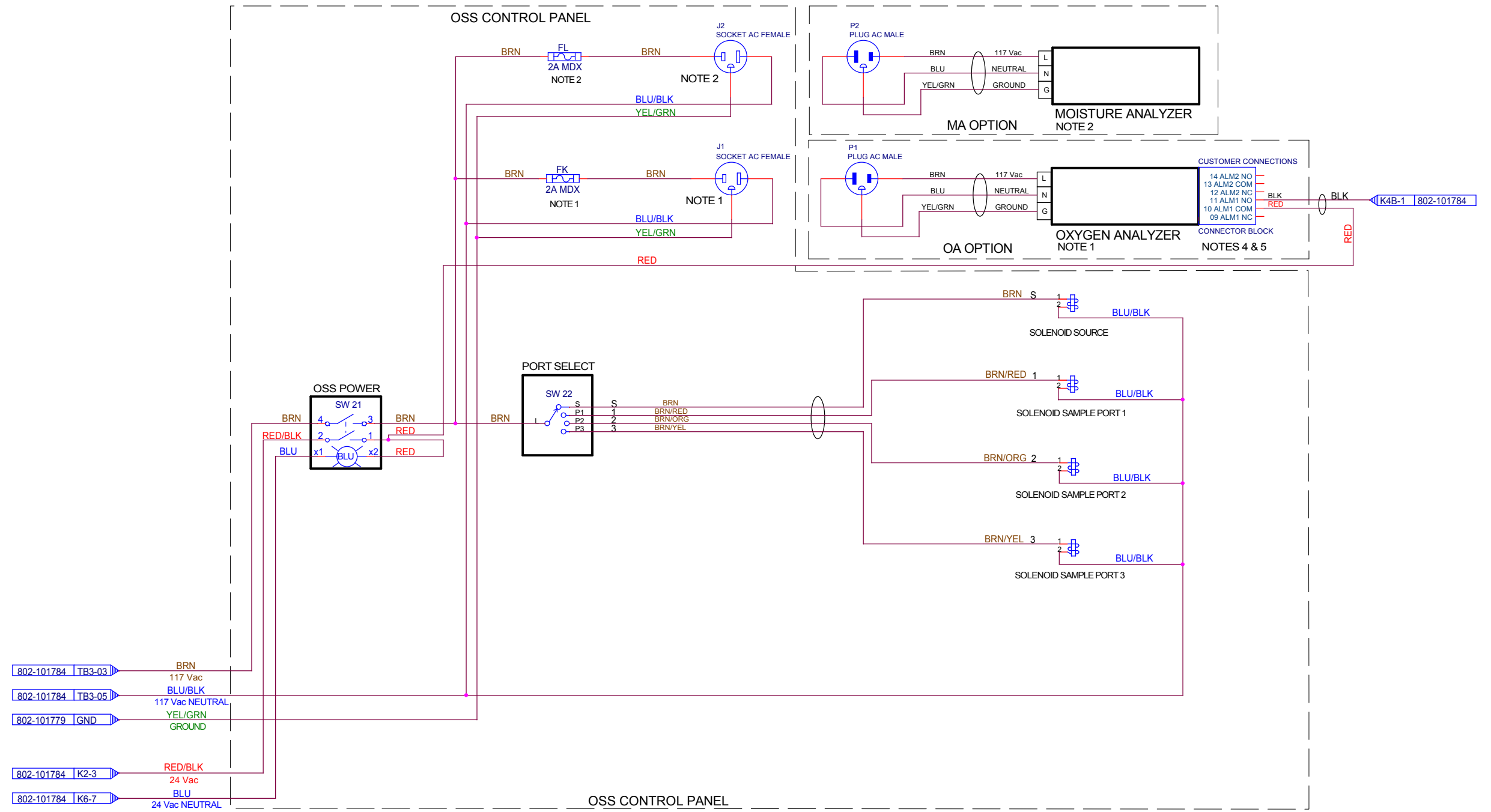


NOTES
 1. ALL WIRE #14 AWG EXCEPT AS NOTED.

REV	DESCRIPTION	DATE	APPROVED	REV	DESCRIPTION	DATE	APPROVED

MODEL	RTC CU-915		Title	ELEMENT WIRING CU-915	
APPROVALS	DATE				
DRAWN	S BARBER	06/03/2015			
CHECKED	S BARBER	06/03/2015	Size	Document Number	
ISSUED	J CLARK	07/07/2015	C	15-003	802-101814-08
			Date:	Thursday, June 04, 2015	Sheet 1 of 1

LCI Furnaces
 DIVISION OF LOCHABER CORNWALL, INC.
 675 NORTH ECKHOFF STREET, BLDG D, ORANGE, CA 92668 USA



- NOTES:
1. SUPPLIED WITH OA OXYGEN ANALYZER OPTION ONLY.
 2. SUPPLIED WITH MA MOISTURE ANALYZER OPTION ONLY.
 3. ALL WIRES 18 AWG.
 4. OA ALARMS SHOWN IN POWER ON / NO ALARM STATE.
 5. SUPPLIED AS OPTION ONLY.

REV	DESCRIPTION	DATE	APPROVED	REV	DESCRIPTION	DATE	APPROVED
4	ALM1 TO K4B-1 24 Vac WIRE COLOR CHANGED	07/16/15	S BARBER	1	ADDED OA ALM1 CONNECTIONS & LARGER TYPE	06/01/15	S BARBER
3	ADDED 2ND POLE TO SW21	07/06/15	S BARBER	2	OFF-PAGE CONNECTIONS TO K2, K4B & K6 CHANGED	06/17/15	S BARBER
2				3	ADDED 2ND POLE TO SW21	07/06/15	S BARBER
1				4	ALM1 TO K4B-1 24 Vac WIRE COLOR CHANGED	07/16/15	S BARBER

APPROVALS		DATE	Title OXYGEN & MOISTURE ANALYZER CONTROL
DRAWN	J CLARK	12/11/2012	
CHECKED	S BARBER	12/17/2012	
ISSUED	J CLARK	07/07/2015	

Size	Document Number	Rev
C	15-003	4
Date	Thursday, July 16, 2015	Sheet 1 of 1

LCI Furnaces
 DIVISION OF LOCHABER CORNWALL, INC.
 675 NORTH ECKHOFF STREET, BLDG D, ORANGE, CA 92668 USA