

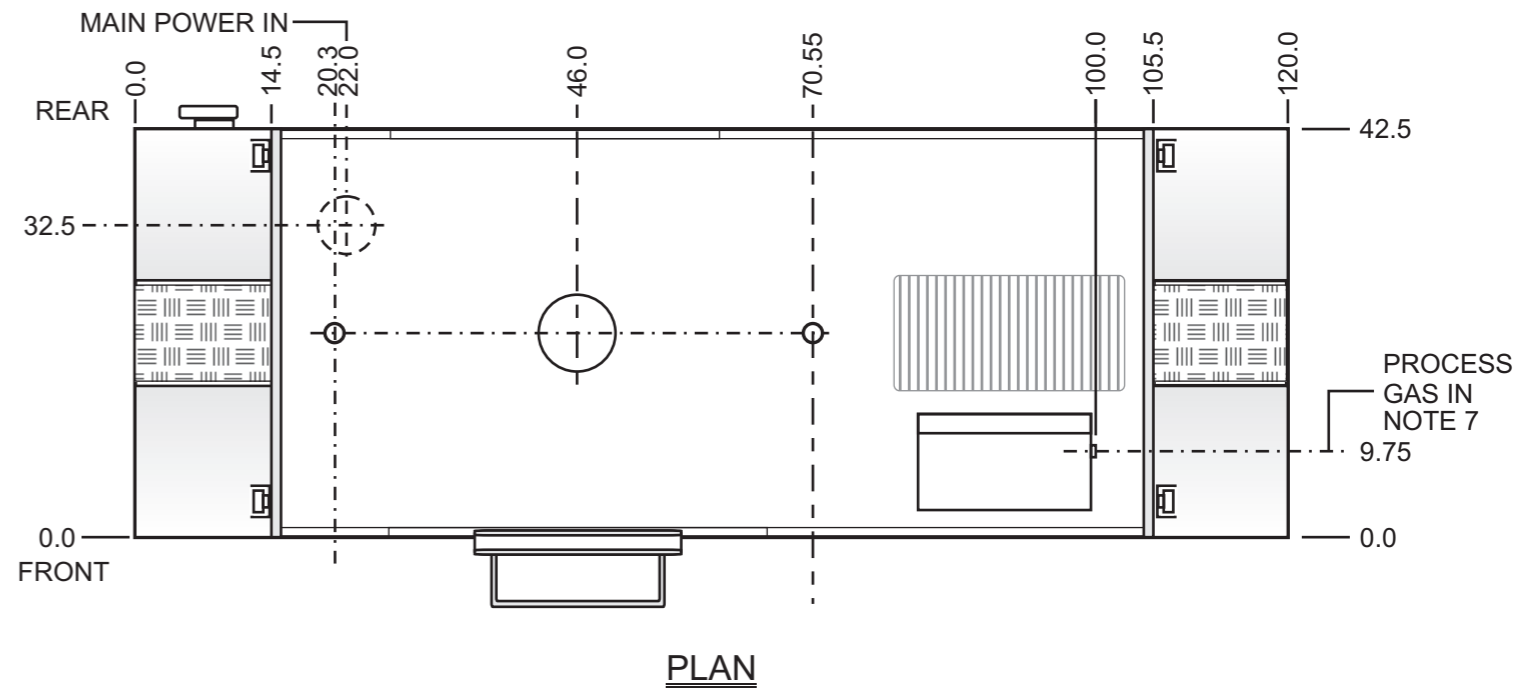
DRAWINGS & SCHEMATICS

Sect	Job/Master	Drawing Nbr.	Title
7.1	19-002	399-10001-306	FURNACE INSTALLATION LA-306-SiC
7.2	STD	412-10101-300	CHAMBER ARRANGEMENT, LA-306-SiC
7.3	STD	700-90674-02	PROCESS GAS PLUMBING
7.4	STD	800-10205-01	SAFETY PANEL
7.5	STD	800-10205-02	Power Supply Control Circuit
7.6	STD	800-10205-03	Frame Wiring
7.7	19-002	802-10205-04	I/O, Analog Control
7.8	19-002	802-10205-05	Element Wiring, SiC Elements

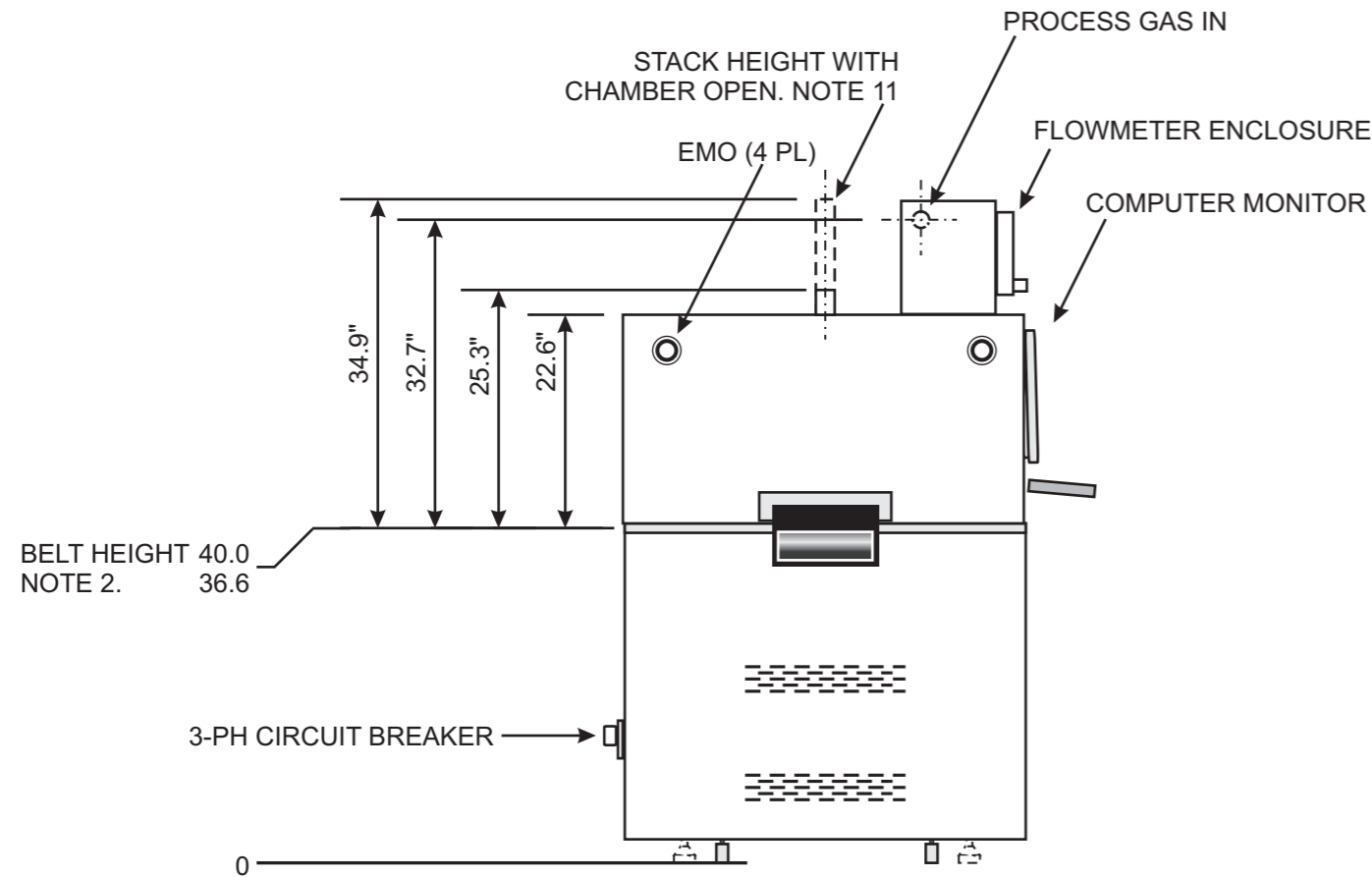
NOTES:

1. UNLESS OTHERWISE STATED, ALL DIMENSION ARE IN INCHES.
2. AJUSTABLE CONVEYOR HEIGHT. REMOVE CASTORS TO LOWER UP TO AN ADDITIONAL 2.5 INCHES.
3. RECOMMENDED CLEARANCE AT FRONT OF FURNACE: 36 INCHES; REAR OF FURNACE, 24 INCHES.
4. RECOMMENDED PROCESS EXHAUST DUCT, 4 IN DIA WITH 6 IN DIA HOOD AND BUTTERFLY DAMPER (BY OTHERS).
5. MAINTAIN 2" CLEARANCE FROM EXHAUST STACK. DO NOT CONNECT DIRECTLY TO PROCESS GAS EXHAUST STACK.
6. OPTIONALLY A 8-IN DIA DUCT CAN BE DIRECTLY CONNECTED PROVIDED NO LOAD IS ADDED TO CABINET (BY OHERS).
7. PROCESS GAS CONNECTIONS ARE 3/4-IN FNPT.
8. PRODUCT VERTICAL CLEARANCE: 1-IN ABOVE BELT.
9. STANDARD ON LA-309, LA-310 and SiC. OPTIONAL ON LA-306
10. OPTIONAL EQUIPMENT.
11. MCL ONLY. STACK RAISES 9.7 INCHES WHEN MOTORIZED CHAMBER LIFT IS ACTIVATED (OPTION).

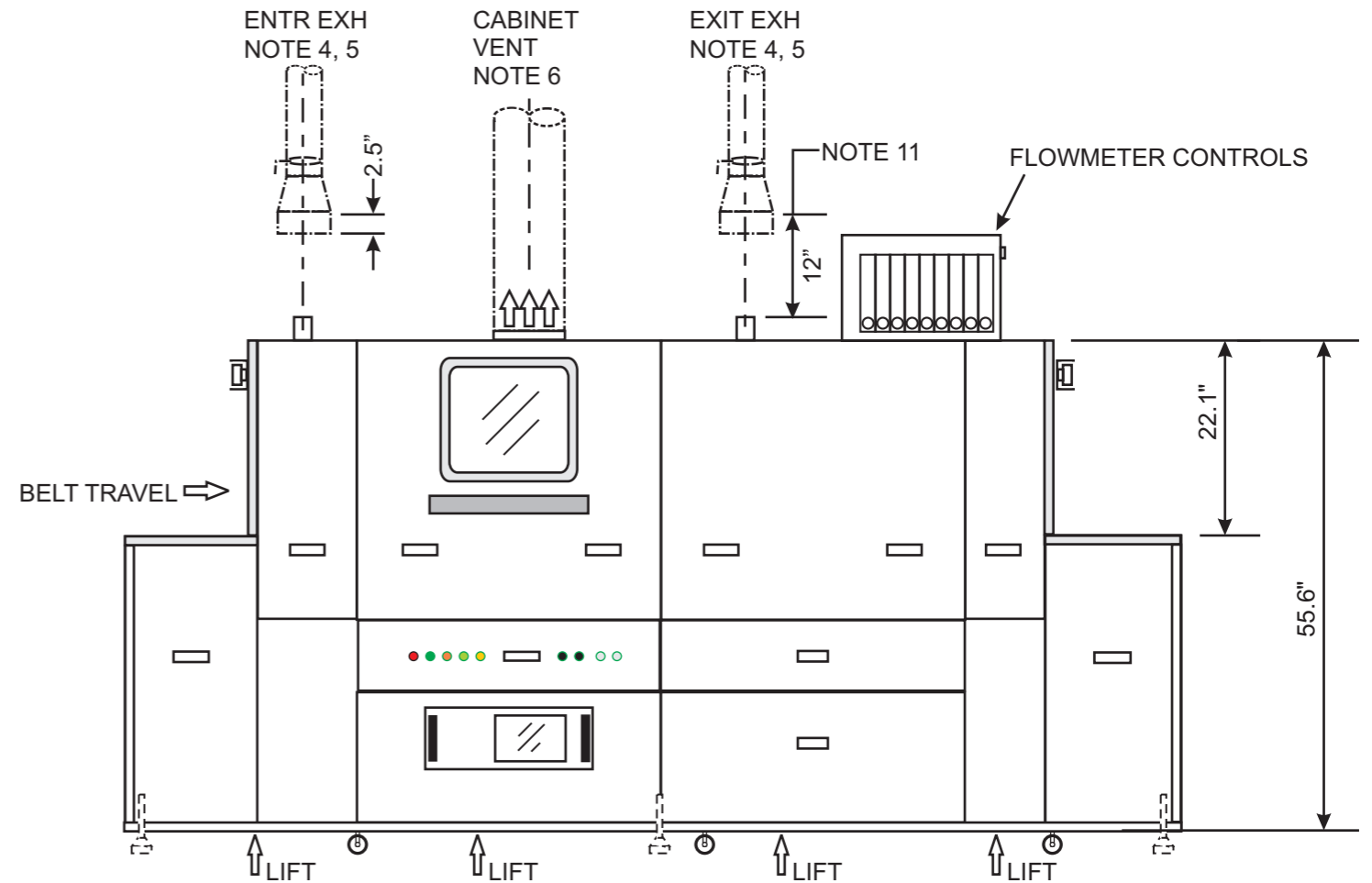
MODEL	LA-306	LA-309	LA-310	-SiC
BELT WIDTH	6 IN	9 IN	10 IN	ALL
FLOWMETERS	8-STD	9-STD	9-STD	9-STD
ENTR STACK DIA	2"	2"	2"	2"
TRANS STACK DIA	2"-OPT	2"	2"	2"



PLAN



ENTRANCE ELEVATION



FRONT ELEVATION

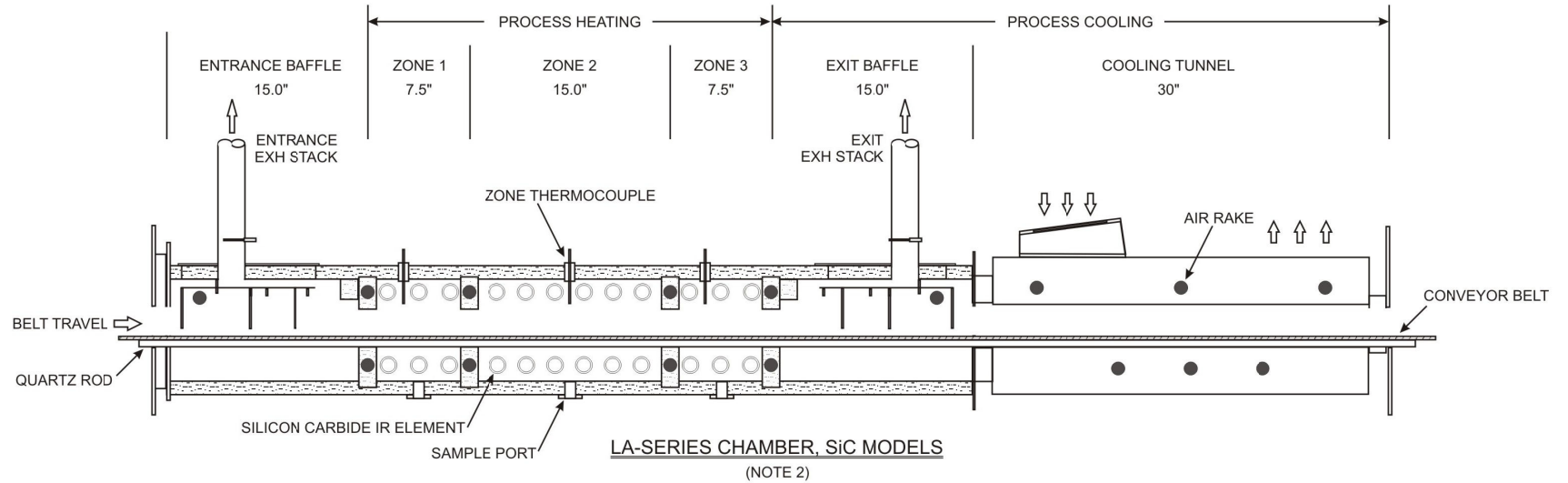
REV	NAME	DATE	DESCRIPTION
02	J CLARK	11/07/19	EXIT STACK CL

PROPRIETARY AND CONFIDENTIAL
 THE INFORMATION CONTAINED IN THIS DRAWING EMBODIES A CONFIDENTIAL DESIGN. IT IS THE SOLE PROPERTY OF TP SOLAR INC AND HAS BEEN SUPPLIED IN CONFIDENCE FOR A SPECIFIC PURPOSE. RECIPIENT AGREES NOT TO USE, DISCLOSE, REPRODUCE OR DISTRIBUTE TO A THIRD PARTY IN WHOLE OR IN PART WITHOUT THE EXPRESS WRITTEN CONSENT FROM TP SOLAR INC AND SHALL IMMEDIATELY RETURN SAME UPON REQUEST.



	NAME	DATE
DRAWN	J CLARK	09/30/19
CHECKED	P RAGAY	10/01/19
APPD	A REY	10/01/19

AEROQUAL LIMITED		
TITLE: FURNACE INSTALLATION LA-306-SiC		
SIZE: B	DWG NO: 19-002-399-10001-306	REV: A.02
SCALE: NONE	WEIGHT:	SHT 1 OF 1



LA-SERIES CHAMBER, SiC MODELS
(NOTE 2)

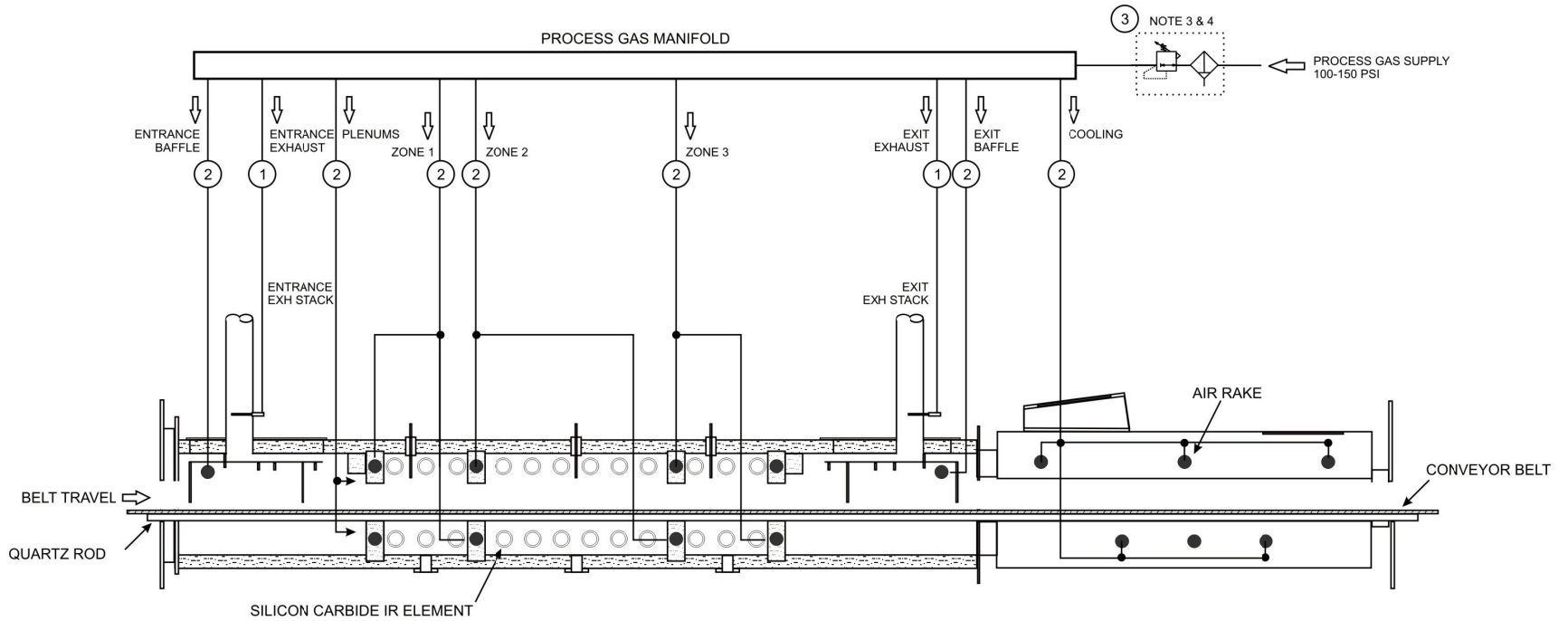
NOTES:

1. ALL DIMENSIONS ARE APPROXIMATE. UNLESS OTHERWISE STATED, DIMENSION ARE IN INCHES.
2. APPLIES SILICON CARBIDE (-SiC) MODELS ONLY. SEE 412-10100-300 FOR QUARTZ MODELS.

PROPRIETARY AND CONFIDENTIAL
THE INFORMATION CONTAINED IN THIS DRAWING EMBODIES A CONFIDENTIAL DESIGN. IT IS THE SOLE PROPERTY OF TP SOLAR INC AND HAS BEEN SUPPLIED IN CONFIDENCE FOR A SPECIFIC PURPOSE. RECIPIENT AGREES NOT TO USE, DISCLOSE, REPRODUCE OR DISTRIBUTE TO A THIRD PARTY IN WHOLE OR IN PART WITHOUT THE EXPRESS WRITTEN CONSENT FROM TP SOLAR INC AND SHALL IMMEDIATELY RETURN SAME UPON REQUEST.



	NAME	DATE	TITLE: CHAMBER ARRANGEMENT LA-SERIES -SiC MODELS	
DRAWN	JCLARK	09/21/19	SIZE: B	DWG NO: 412-10101-300
CHECKED			SCALE: NONE	WEIGHT:
APPD			SHT 1	OF 1



LA-SERIES CHAMBER, SiC MODELS

(NOTE 2)

NOTES:

1. ALL DIMENSIONS ARE APPROXIMATE. UNLESS OTHERWISE STATED, DIMENSION ARE IN INCHES.
2. APPLIES SILICON CARBIDE (-SiC) MODELS ONLY. SEE 801-90674-01 FOR QUARTZ MODELS.
3. PROVIDE 100-150 PSI CLEAN DRY GAS TO AIR FILTER REGULATOR (OPTIONAL).
4. REGULATE TO 75 PSIG TO FURNACE.

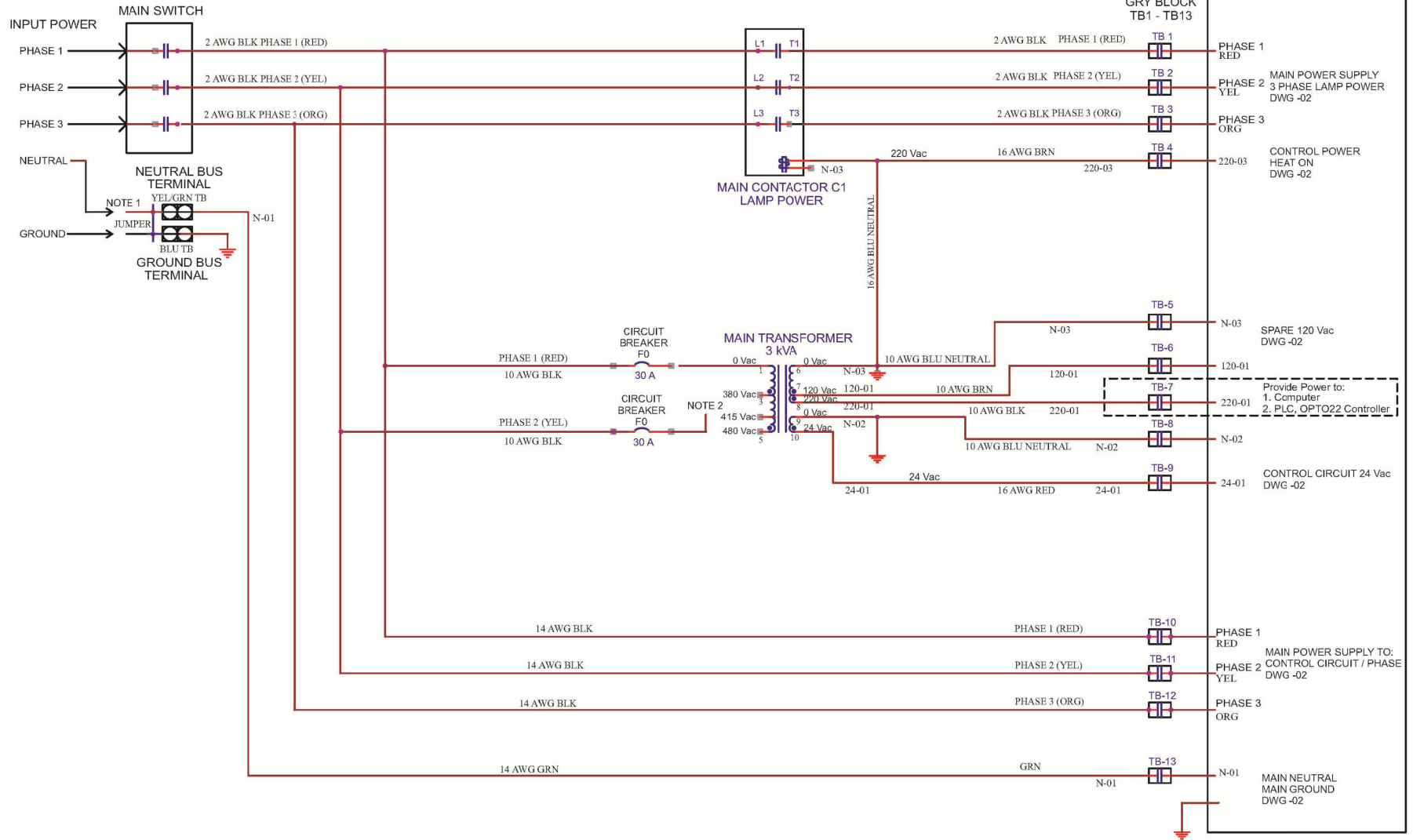
1	FILTER/PRESSURE REGULATOR	3
7	FLOWMETER, 0-100 LPM (0-200 SCFH)	2
2	FLOWMETER, 0-50 LPM (0-100 SCFH)	1
QTY	DESCRIPTION	ITEM

PROPRIETARY AND CONFIDENTIAL
 THE INFORMATION CONTAINED IN THIS DRAWING EMBODIES A CONFIDENTIAL DESIGN. IT IS THE SOLE PROPERTY OF TP SOLAR INC AND HAS BEEN SUPPLIED IN CONFIDENCE FOR A SPECIFIC PURPOSE. RECIPIENT AGREES NOT TO USE, DISCLOSE, REPRODUCE OR DISTRIBUTE TO A THIRD PARTY IN WHOLE OR IN PART WITHOUT THE EXPRESS WRITTEN CONSENT FROM TP SOLAR INC AND SHALL IMMEDIATELY RETURN SAME UPON REQUEST.



DRAWN	J CLARK	10/08/19	TITLE: PROCESS GAS PLUMBING LA-SERIES -SiC MODELS	
CHECKED	P RAGAY	10/10/19	SIZE: B	DWG NO: 801-90674-02
APPD	A REY	10/10/19	SCALE: NONE	WEIGHT: SHT 1 OF 1
		REV: A.01		

SAFETY ENCLOSURE PANEL



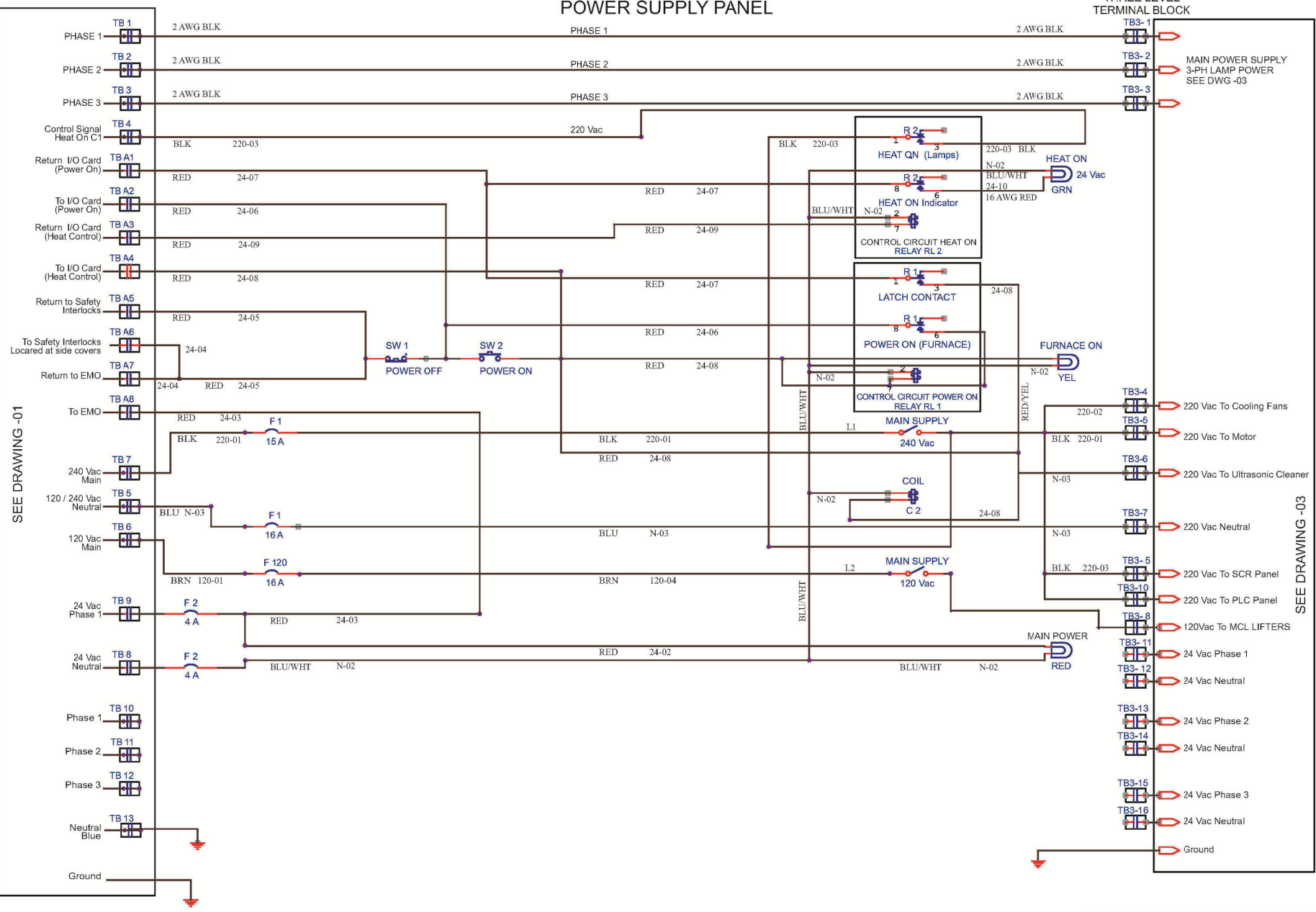
NOTES:

1. FOR 5 WIRE SYSTEM, JUMPER REMOVED.
FOR 4 WIRE SYSTEM, JUMPER ADDED.
2. TAP TRANSFORMER ACCORDING TO INPUT POWER.

TP SOLAR, INC	
SAFETY ENCLOSURE	
Sheet	Document Number
C	800-10205-01
Date	Revision
Wednesday, October 01, 2008	1 of 1

POWER SUPPLY PANEL

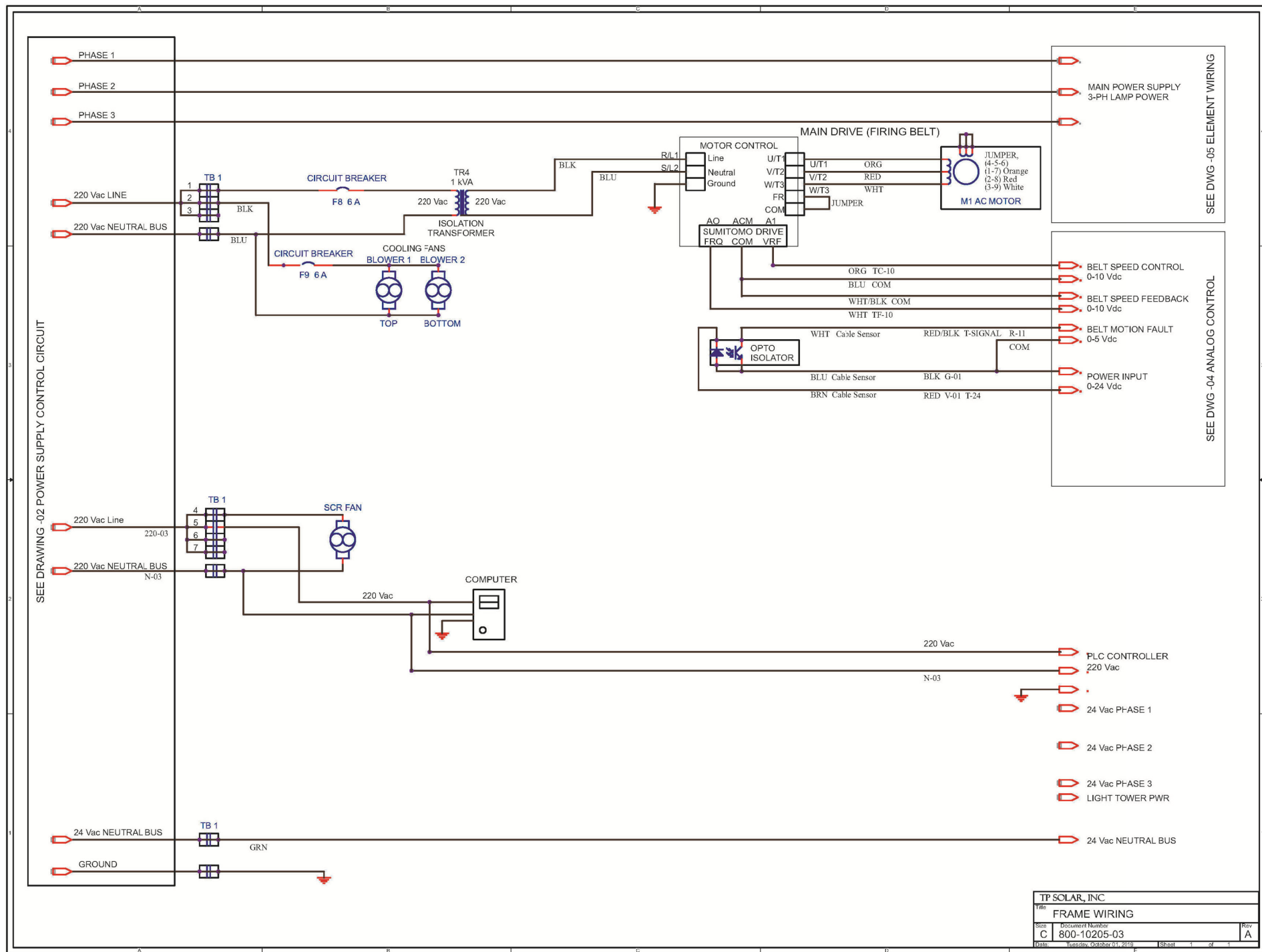
TB3-X THREE LEVEL TERMINAL BLOCK



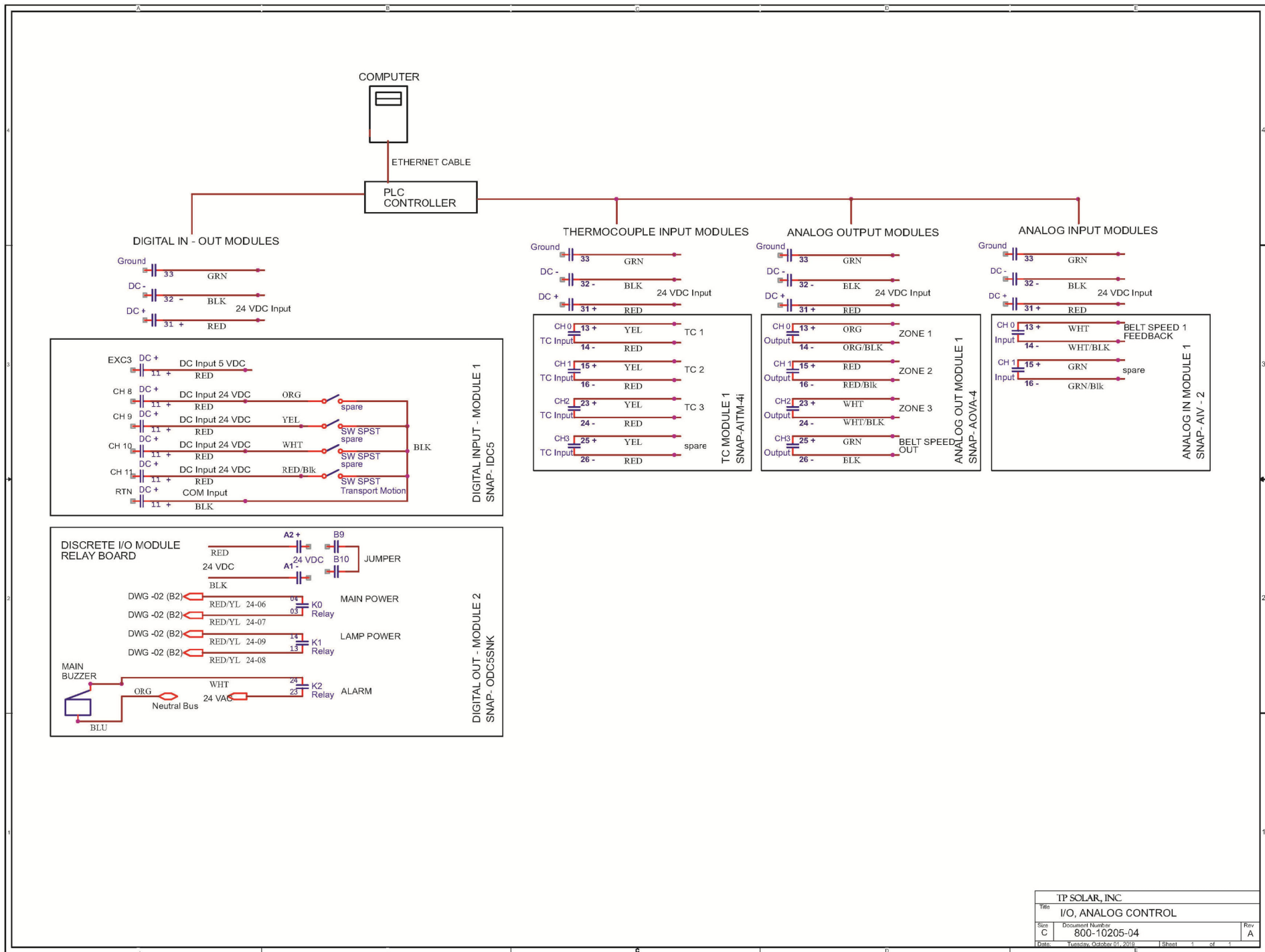
SEE DRAWING -01

SEE DRAWING -03

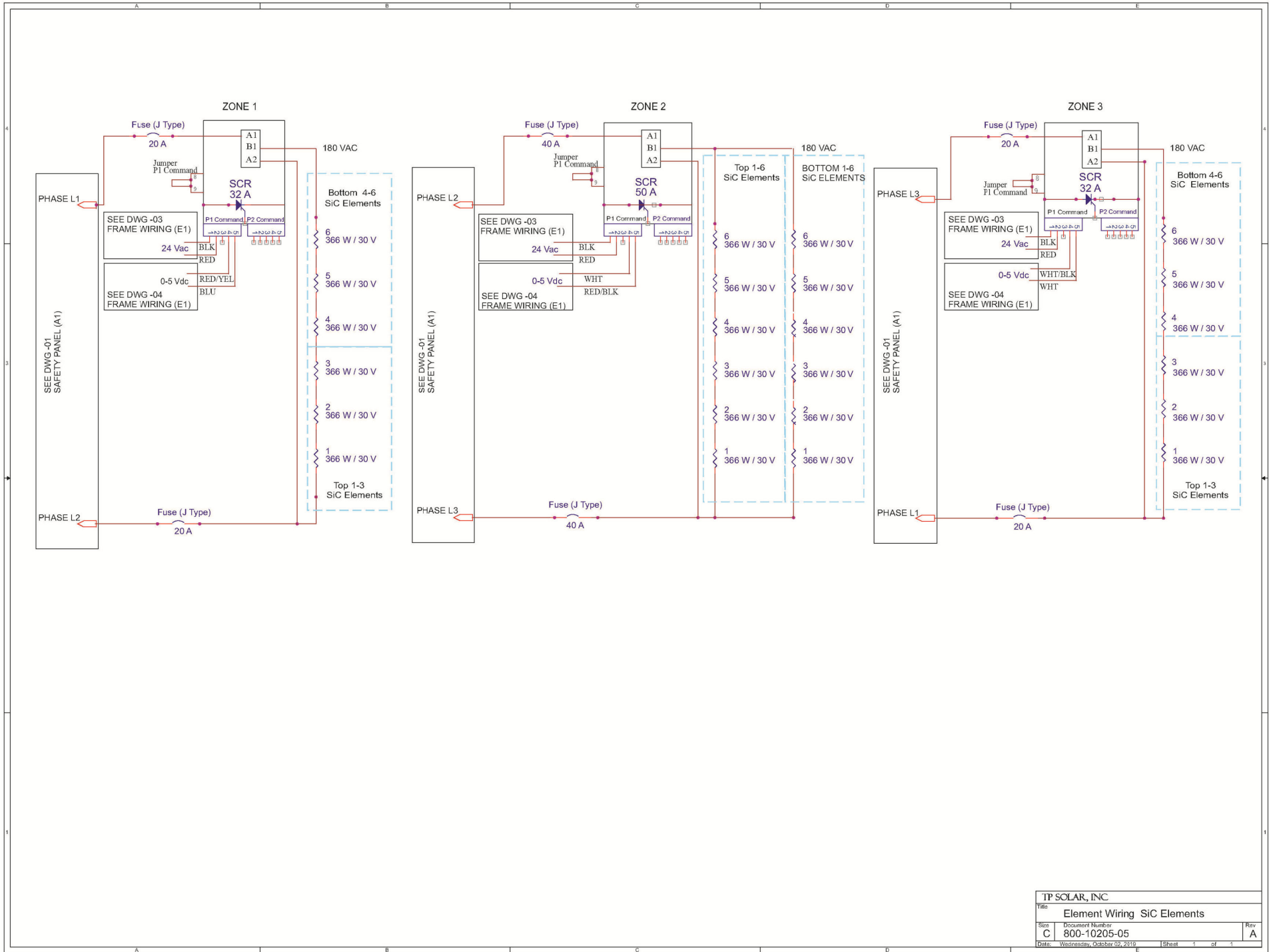
TP SOLAR, INC			
Title:	POWER SUPPLY CONTROL CIRCUIT		
Size:	Document Number:		Rev:
C	800-10205-02		A
Date:	Tuesday, October 01, 2019	Sheet:	1 of 1



TP SOLAR, INC.			
Title:	FRAME WIRING		
Size:	Document Number:	Rev:	
C	800-10205-03	A	
Date:	Tuesday, October 21, 2010	Sheet:	1 of 1



TP SOLAR, INC			
Title	I/O, ANALOG CONTROL		
Size	Document Number	Rev	
C	800-10205-04	A	
Date	Tuesday, October 01, 2008	Sheet	1 of 1



TP SOLAR, INC		
Title: Element Wiring SiC Elements		
Sheet: C	Document Number: 800-10205-05	Rev: A
Date: Wednesday, October 22, 2019	Sheet: 1 of 1	

