

LA-309 Annealing and Metal Processing Furnace

Computer controlled three-zone 1000C Annealing Furnace with 150 mm W belt and 100 mm H throat (furnace internal height) manufactured for OMS Ratto (Rome, Italy) for annealing and brazing industrial metals in a nitrogen environment. Total heating length is 760 mm, cooling is 1140 mm. Options include on-screen monitoring of Oxygen concentration in 3 furnace zones, internet and network enabled. Pictures taken at our factory and at customers site. Installed October 2010.



LA-309 Nitrogen High Temperature Furnace at Customer Site
(3250 mm L x 960 mm W x 1700 mm H)



LA-309 Entrance
(240 mm belt)



LA-309 Software Process Screen
During @ 800 C Profile, Belt Speed: 50 cm/min



LA-309 During 1000 C burn-in

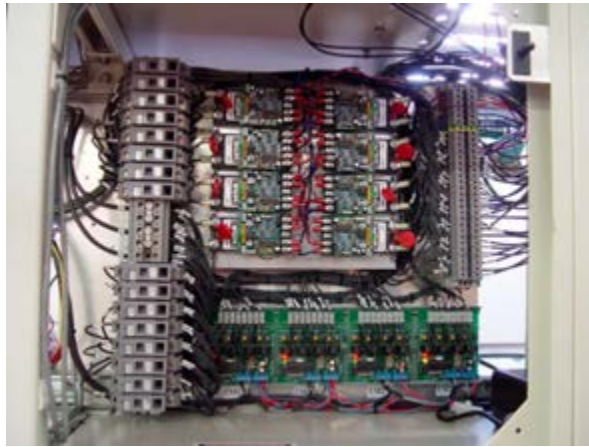


LA-309 on Loading Dock



LA-309 Training in Rome, Italy

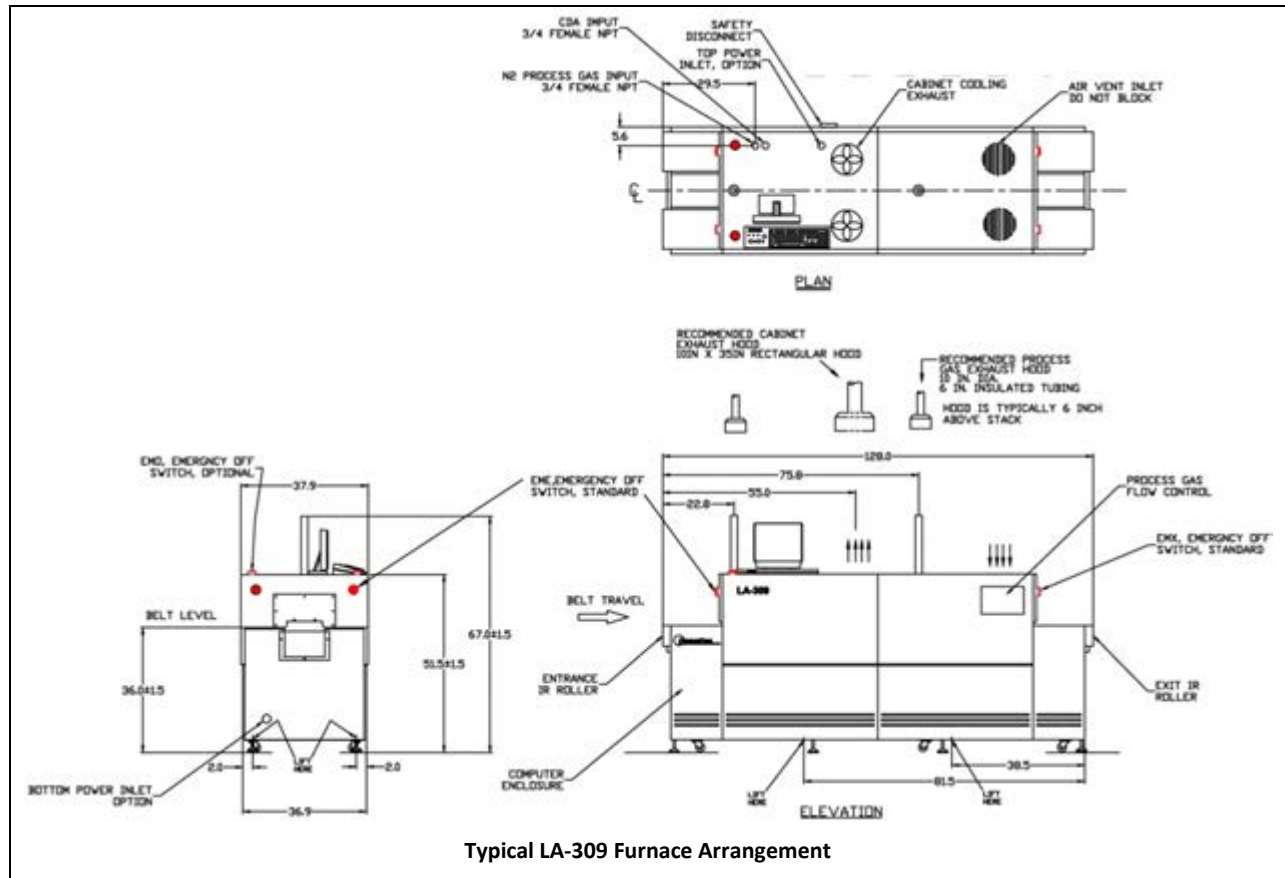
LA-309 Equipment Details



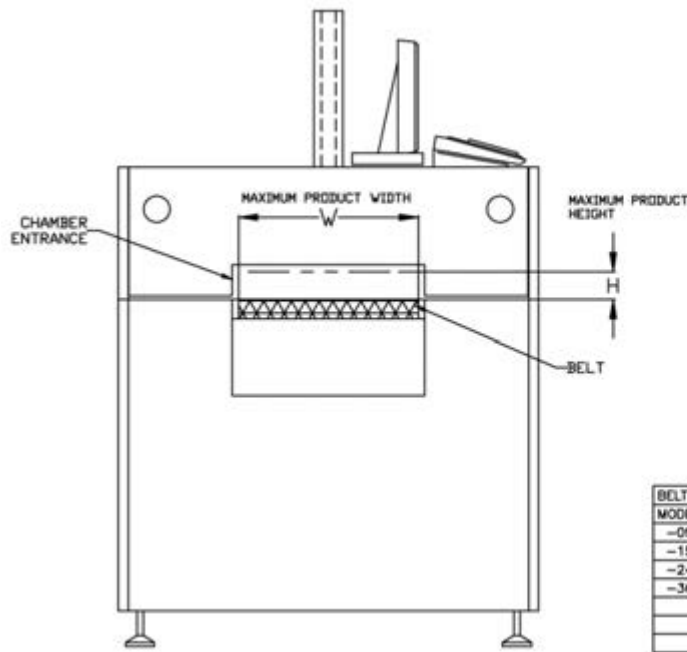
LA-309 SCR Panel with Element Monitor Boards



LA-309 Full Firing with Plenum Covers Off



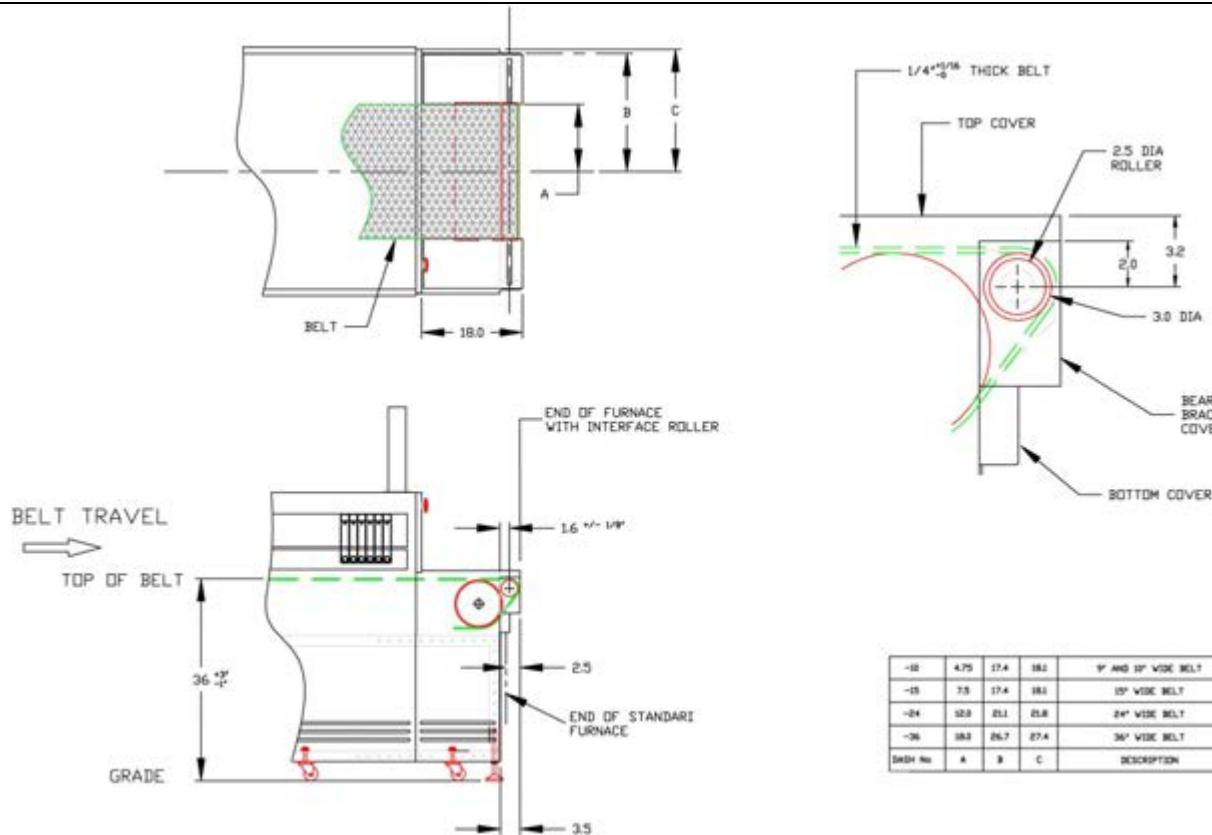
LA-309 Popular Options



BELT	CHAMBER	DESCRIPTION	*W* PRODUCT WIDTH		*H* PRODUCT HEIGHT	
MODEL	OPTION		INCH	MM	INCH	MM
-09		9" BELT	9.0	229		
-15		15" BELT	15.0	381		
-24		24" BELT	24.0	610		
-36		36" BELT	36.0	914		
	STD	2" THROAT			2.0	50
	PH1	1" THROAT			1.0	25
	PH4	4" THROAT			3.9	100

Product Clearance Options

Standard Product Clearance is 50 mm (2 inches). Specify PH1 for 25 mm (1 inch) for tighter control and lower gas consumption. Specify PH4 for 100 mm chamber opening for larger product.



-10	4.75	17.4	18.1	19"	10" WIDE BELT
-15	7.5	17.4	18.1	19"	15" WIDE BELT
-24	10.0	21.1	21.8	24"	24" WIDE BELT
-36	16.0	26.7	27.4	36"	36" WIDE BELT
DASH No	A	B	C	DESCRIPTION	

Interface Roller Option

Standard entrance and exit rollers are 200 mm (8 inches) diameter. To facilitate smoother product handoff to loaders and unloaders, specify IR-E (Entrance) or IR-X (Exit) interface roller option for smaller 76-mm (3-inch) diameter.

Available on most furnaces except LA-306 series.